

# Dean's Report for DIAC

September 11, 2008

# Dean's Report

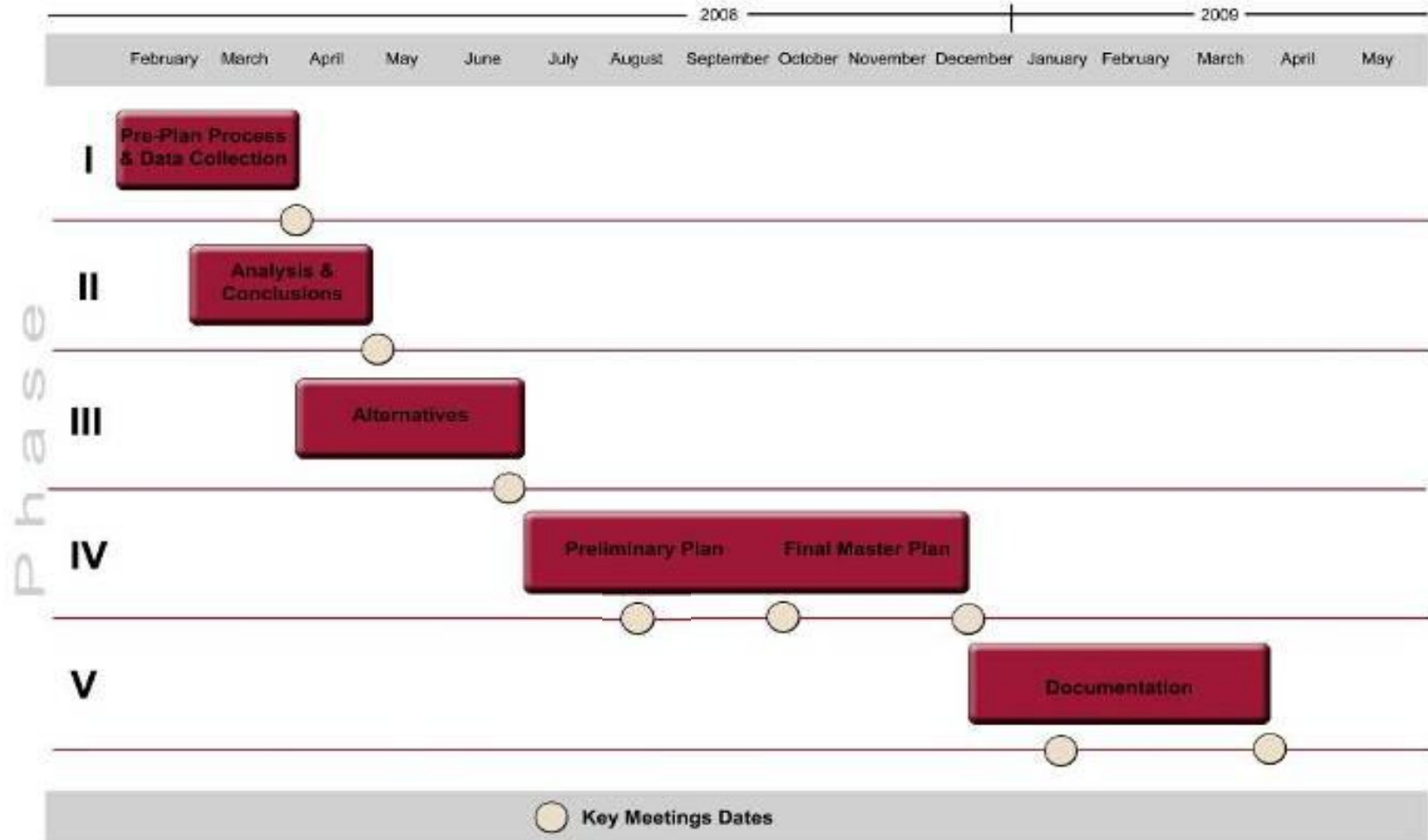
- IU President's Priorities
- IUPUI Goals and Priorities
- School Report
  - General information update
  - Organizational alignments
  - 2007-08 Accomplishments
  - Priorities for 2008-09

# 2008-09 Priorities for IU System

- Budget submission to legislature for 2009-11
- University campaign
- IU Master Plan
- Control of expenses (healthcare costs)
- Administrative searches
- International strategies
- Research administration portfolio
- Diversity plans
- IU's relationship to Clarion
- Relationships among IU, Purdue, and Ivy Tech
- Statewide economic development and IU RTC
- New academic initiatives (School of Public Health)

- **Research, Scholarship, and Creative Activities**
  - 2007-08 External Grants (IUB: \$191M, PWL: \$292M, IUPUI: \$303M)
  - 29 Signature Centers (\$300K per center for three years)
- **Teaching and Learning**
  - One year retention rate for fall 2007 is expected to be 69.5%.
  - 2007 fall to 2008 spring retention rate is 87.4%.
  - Six year graduation rate for 2002 cohort is 32%.
  - Enrollment shaping
- **Civic Engagement**
  - National awards in civic engagement
  - Translating Research into Practice (Jafari, El-Mounayri)
- **Enhancement of the Resource Base**
  - Fundraising campaign
  - SRUF (Support for Recruitment of Underrepresented Faculty)

# IUPUI Master Plan-1



# IUPUI Master Plan-2

- **Academic / Research:**
  - 9,439,260 GSF today
  - Up to 5 million GSF new, replacement
  - 75 acres (medical precinct)
- **Residential:**
  - 419,919 GSF Residential, 1,066 Beds
  - Additional 2,500 Beds (10%)
  - 1,000,000 GSF at 400 GSF/Bed
  - 30 acres
  - Or, additional 10,666 Beds (33%)
  - Up to 3,200,000 at 400 GSF / Bed
  - 99 acres
- **Parking:**
  - 16,660 spaces (8,448 surface) today
  - Re-distribute 6,800 surface spaces (75%)
  - 54 acres surface or 12 acres structured
- **Recreation/Athletics:**
  - 30 acres of Recreation/Athletics today
  - Provide up to 30 acres

- **Surveyed 9 of 12 Peer Institutions:**
  - • University at Buffalo
  - • University of Alabama at Birmingham
  - • University of Cincinnati
  - • University of Illinois Chicago
  - • University of Louisville
  - • University of New Mexico
  - • University of South Florida
  - • University of Utah
  - • Virginia Commonwealth University
- **IUPUI has 25% less space / student than the average peer institution (191 ASF / Student vs. 256 ASF)**
- **IUPUI has 26% less space / faculty than the average peer institution (2,347 ASF / Faculty vs. 3,154 ASF)**

- **Targeted enrollment: 35,000**
- **Projected Space Demand (preliminary): 3.5 Million GSF (2.1 million ASF)**
  - Research: 1 million ASF
  - Academic Offices: 300,000 ASF
  - Classrooms: 90,000 ASF
  - Teaching labs: 40,000 ASF
  - Academic non-office 60,000 ASF
  - Assembly/Exhibit: 130,000 ASF
  - Phys Education/Recreation: 90,000 ASF
  - Administrative Offices: 45,000 ASF
  - Physical Plant: 45,000 ASF
  - Administration non-office: 70,00 ASF
  - Campus Center: 80,000 ASF
  - Athletics: TBD



# IUPUI Master Plan-3

- **Targeted enrollment: 35,000**
- **Projected Space Demand (preliminary): 3.5 Million GSF (2.1 million ASF)**
  - Research: 1 million ASF
  - Academic Offices: 300,000 ASF
  - Classrooms: 90,000 ASF
  - Teaching labs: 40,000 ASF
  - Academic non-office 60,000 ASF
  - Assembly/Exhibit: 130,000 ASF
  - Phys Education/Recreation: 90,000 ASF
  - Administrative Offices: 45,000 ASF
  - Physical Plant: 45,000 ASF
  - Administration non-office: 70,00 ASF
  - Campus Center: 80,000 ASF
  - Athletics: TBD

- **Concept Direction**

- Recreational Waterfront or Riverfront Housing
- Michigan and New York Streets become 2-way
- Vermont Street pedestrian-oriented

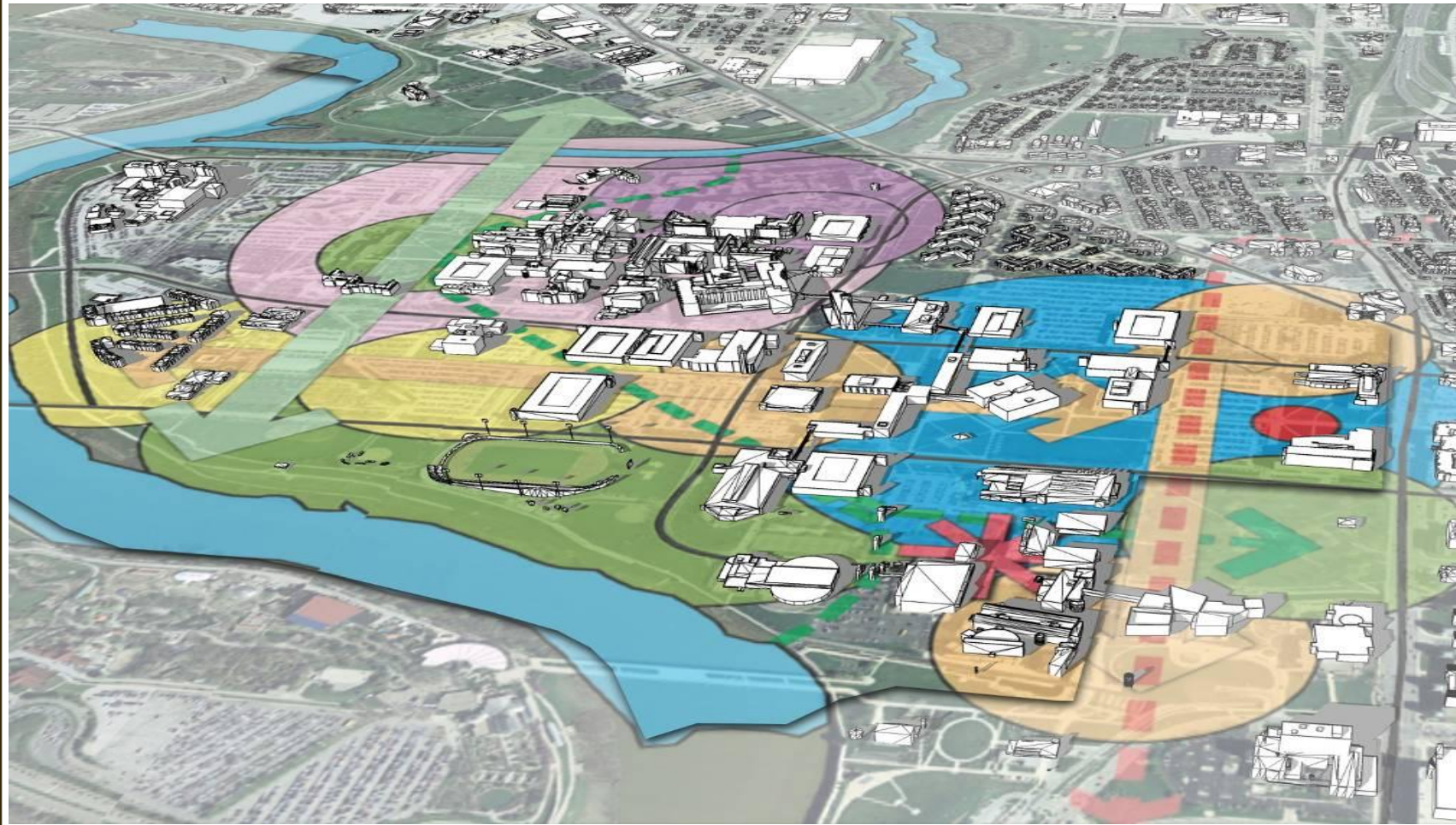
- **Residential/Mixed Use District**

- Strengthen edges and spaces within East

- **Campus Academic District**

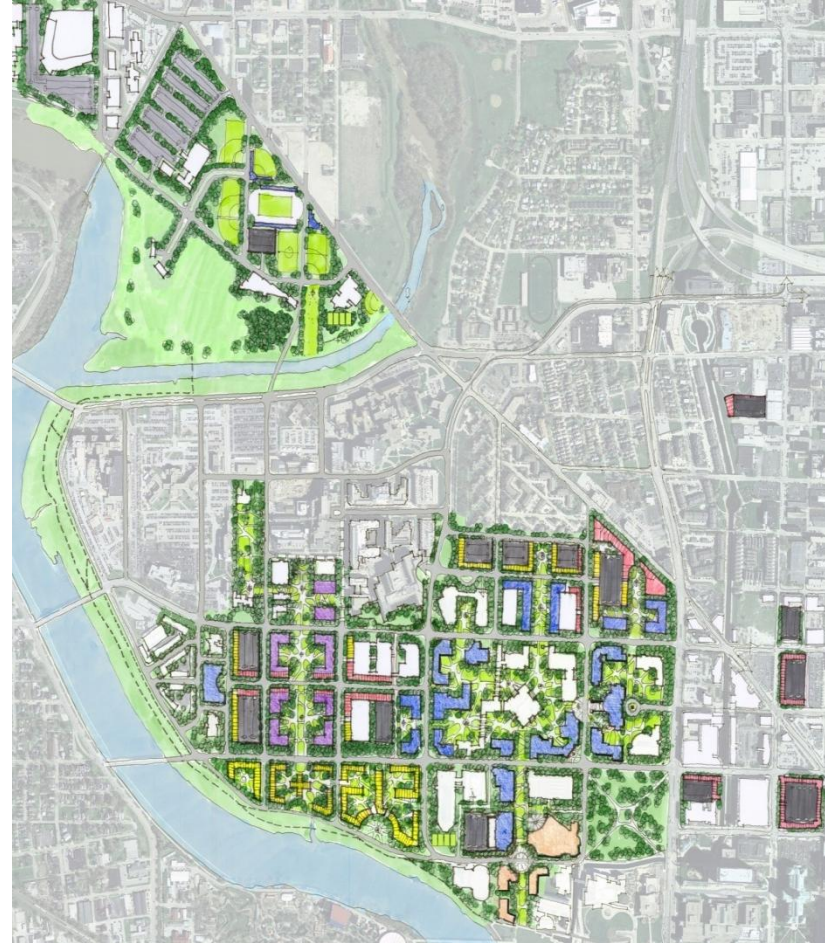
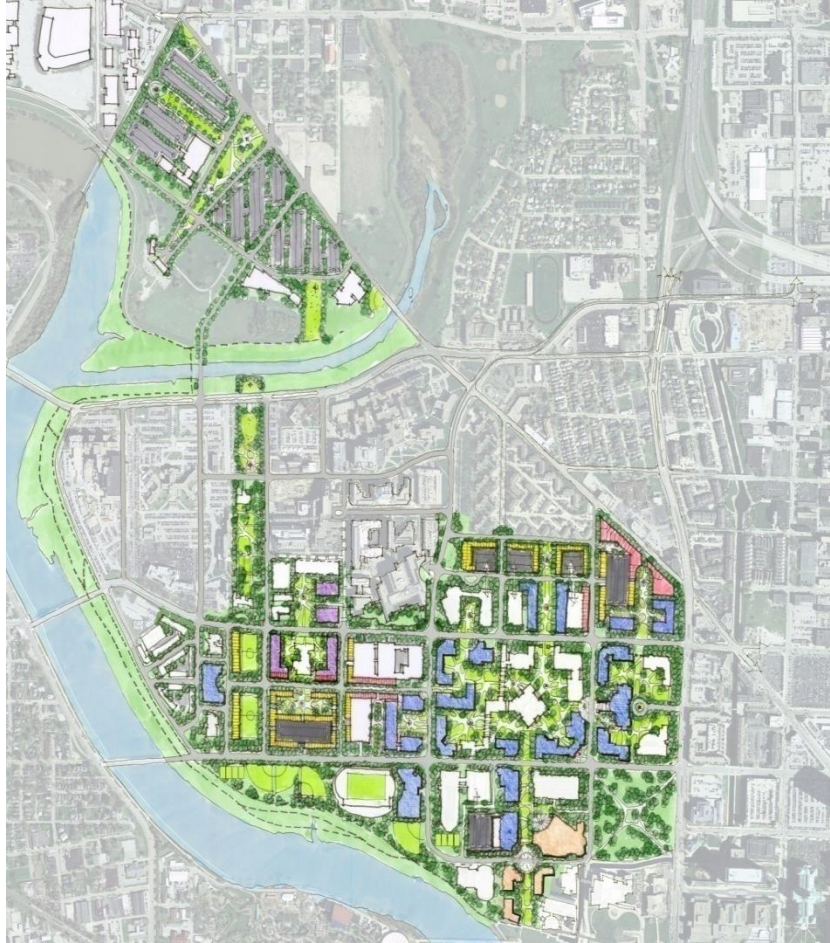
- Mixed Use at Indiana Avenue and Cultural Trail
- University Hall Performance Venue adjacent to Military Park
- West Research Campus bridging renovated
- Michigan Street for immediate building sites
- North – South greenway linking historic resources from Fall Creek to White River through Ball Gardens
- Residential District adjacent to Lockefield Gardens
- Long Term Planning for Wishard Hospital Move

# IUPUI Master Plan-5





# IUPUI Master Plan-6





# IUPUI Master Plan-7

IUPUI

SCHOOL OF ENGINEERING  
AND TECHNOLOGY

A PURDUE UNIVERSITY SCHOOL  
Indianapolis



# School Report

- General information update
- Organizational alignments
- 2007-08 accomplishments
- 2008-09 priorities

- **Associate of Science (AS) programs**
  - Architectural Technology
  - Biomedical Engineering Technology
  - Computer and Information Technology
  - Computer Engineering Technology
  - Computer Graphics Technology
  - Construction Engineering Management Technology
  - Electrical Engineering Technology
  - Interior Design Technology
  - Mechanical Engineering Technology
  - Organizational Leadership and Supervision

- **Bachelor of Science (BS) programs**
  - Biomedical Engineering Technology
  - Computer and Information Technology
  - Computer Engineering Technology
  - Computer Graphics Technology
  - Construction Engineering Management Technology
  - Electrical Engineering Technology
  - Interior Design Technology
  - Mechanical Engineering Technology
  - Organizational Leadership and Supervision



- **Designated BS programs**

- Bachelor of Science in Biomedical Engineering
- Bachelor of Science in Computer Engineering
- Bachelor of Science in Electrical Engineering
- Bachelor of Science in Engineering
- Bachelor of Science in Mechanical Engineering
- Bachelor of Science in Motorsports Engineering
- Bachelor of Science in Music Technology (pending approval-IU degree)

- **Master of science programs**

- Master of Science
- Master of Science in Biomedical Engineering
- Master of Science in Engineering
- Master of Science in Electrical and Computer Engineering
- Master of Science in Mechanical Engineering
- Master of Science in Music Technology (IU degree)
- Master of Science in Music Therapy (IU degree)
- Master of Science in Technology

- **PhD programs\***
  - Biomedical Engineering
  - Electrical and Computer Engineering
  - Mechanical Engineering

\*Jointly administered with Purdue University, WL

# Enrollment Data

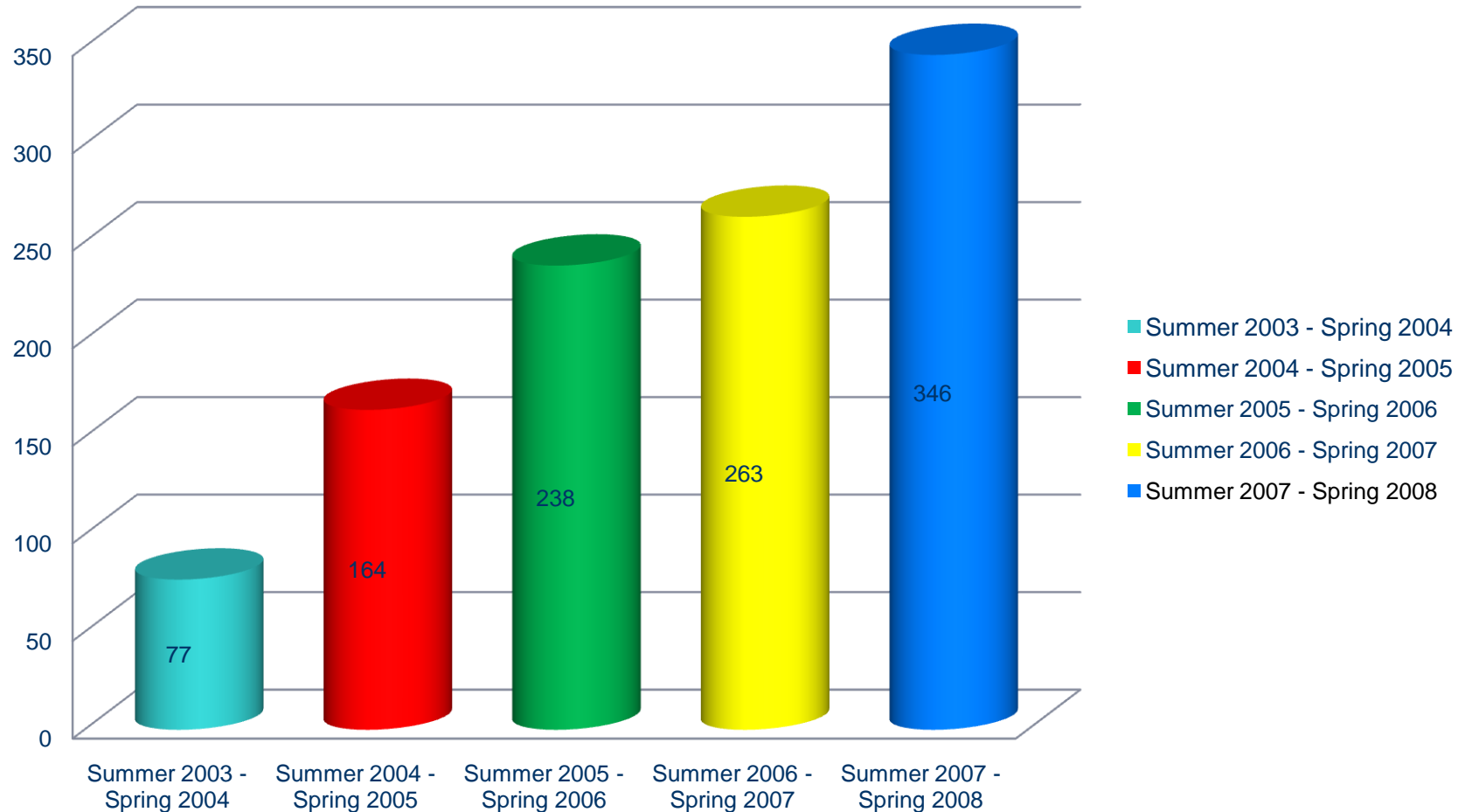
Calendar Year	Fall Semester Headcount	Student Credit Hours	Degrees Awarded			
			AS	BS	MS	Cert
2002-03	2,543	49,795	241	362	36	79
2003-04	2,575	50,394	282	337	30	104
2004-05	2,350	48,809	226	341	60	126
2005-06	2,213	46,221	193	364	45	91
2006-07	2,287 (2,322) with M	43,768 (48,974) with M	136	336	43	80
2007-08	2,444 (5.3%)	49,733 (1.7%)	114 (- 16.2%)	378 (12.5%)	77 (79.0%)	102 (25.5%)
2008-09	2,242*	23,816*				

# Enrollment Data

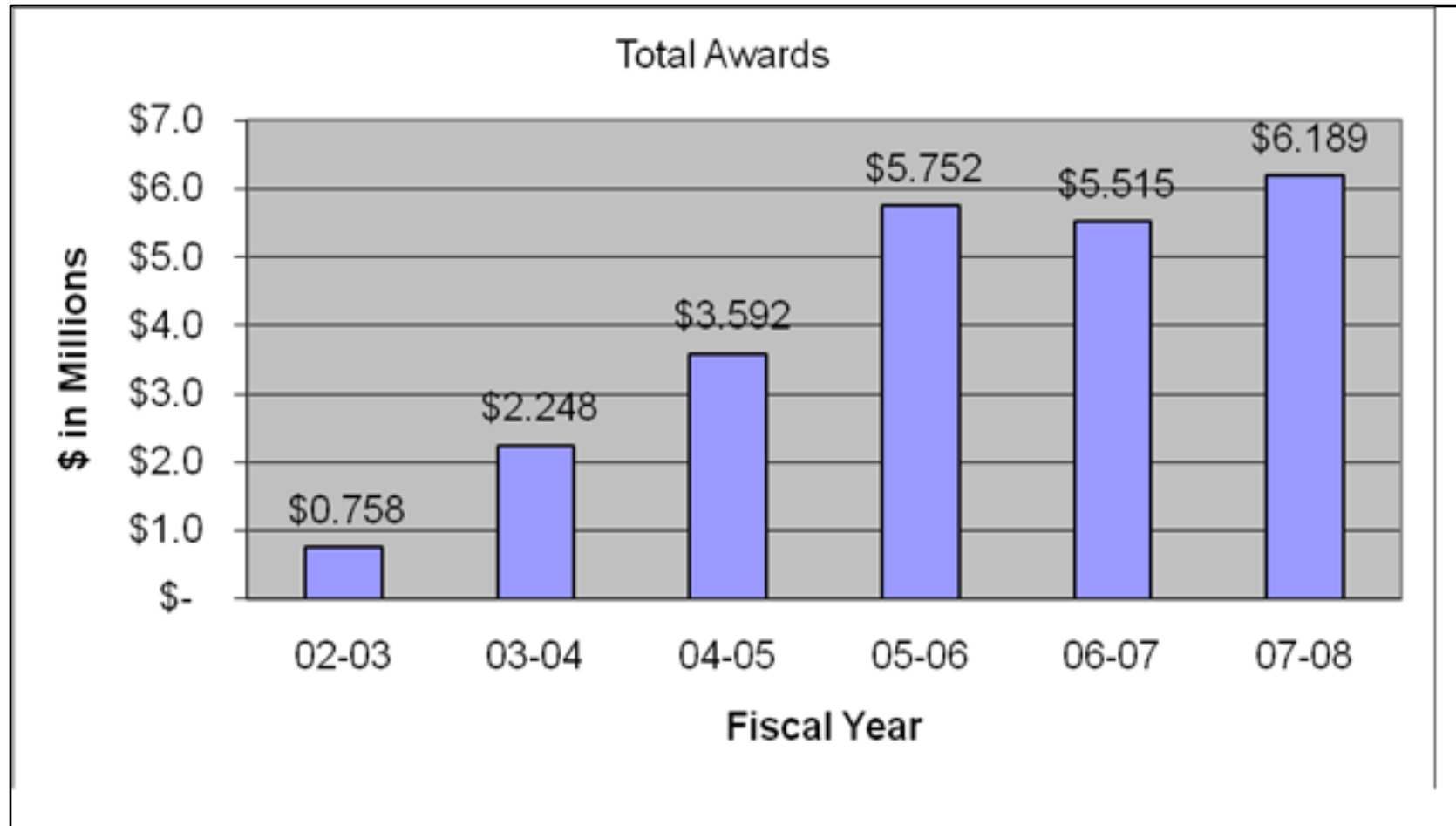
- IUPUI headcount exceeded 30,000 for the first time.
- 72% of undergraduate students are full time.
- Highest number of minority students enrolled (4,551)
- School student headcount was up 3.4% and student credit hours were up 4.0% as compared to last year.
- School has the highest number of non-resident international students (295, 11%)

# Internships and Co-ops

## Internship and Cooperative Education



# Grants and Contracts Data



- Originally developed as an E&T program, extended to entire IUPUI
- Received additional CTE funds from campus together with the Center for Research and Learning (CRL)
- A summer program was held for the first time this year, where each student:
  - received a stipend of \$3,200 for full-time research, and
  - attended the national CIC Conference at Michigan State to present posters
- 27 projects and 81 students were funded (75% E&T) in 2007-08
- New Call for Proposals – Deadline: September 10

Number of:	Fall 2007	Spring 2008	Summer 2008	Total
<b>Projects</b>	13	6	8	27
<b>Mentors/Co-mentors</b>	26	11	16	53
<b>Students</b>	37	12	32	81



# Development

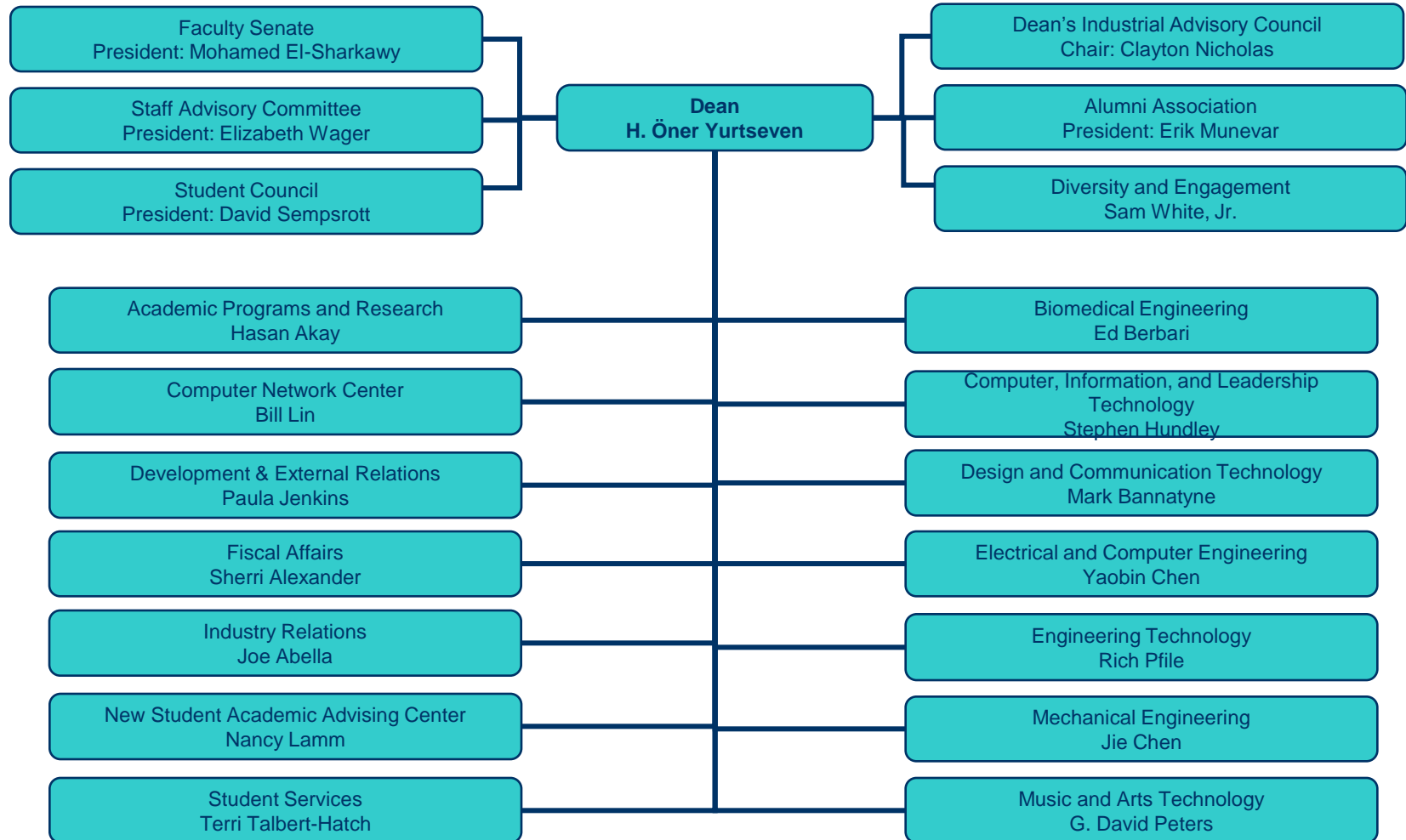
FYE	Cash	In-Kind	Total	New Planned Gift Expectancies	Total Planned Gift Expectancies
00-01	\$ 406,489	\$ 358,229	\$ 764,718		
01-02	\$ 341,875	\$ 153,433	\$ 495,308	\$ 215,000	\$ 215,000
02-03	\$ 393,127	\$ 1,339,239	\$ 1,732,366	\$ 70,000	\$ 335,000
03-04	\$1,956,649	\$ 156,625	\$ 2,113,274	\$ 50,000	\$ 385,000
04-05	\$ 505,006	\$ 62,406	\$ 567,412	\$ 60,000	\$ 445,000
05-06	\$ 662,772	\$ 97,503	\$ 760,275	\$ 100,000	\$ 545,000
06-07	\$ 531,673	\$ 20,553	\$ 552,226	\$ 250,000	\$ 795,000
07-08	\$ 579,113	\$ 24,731	\$ 603,844	\$ 100,000	\$ 895,000

# Planning for Comprehensive Campaign

<b>Preliminary Working Goal</b>	\$12M
<b>Priority Setting Underway</b>	
Endowed Chairs and Professorships	
Endowed Scholarships and Fellowships	
International Programs (study abroad, travel and scholarships)	
IUPUI Center for Innovation	
<b>Identification of E&amp;T Campaign Leadership Cabinet</b>	

Fiscal Year	2003-04	2004-05	2005-06	2006-07	2007-08
Cr Hrs (ug)	49,014	46,894	44,319	41,856	42,597
Cr Hrs (gr)	1,380	1,915	1,902	1,912	2,077
<b>Total</b>	<b>50,394</b>	<b>48,809</b>	<b>46,221</b>	<b>43,768</b>	<b>44,674</b>
Stu Fees	8,965,338	9,380,575	9,700,016	10,296,794	11,875,767
State Appr	9,726,765	8,626,727	8,276,130	9,097,873	8,992,459
ICR	428,032	404,941	889,250	1,041,710	1,341,742
Assess	(5,793,612)	(4,915,954)	(5,540,671)	(5,615,428)	(5,865,626)
<b>Total Inc</b>	<b>13,654,804</b>	<b>13,653,599</b>	<b>14,635,375</b>	<b>14,882,929</b>	<b>14,955,760</b>
Compensa	11,448,314	11,719,598	12,771,808	12,588,323	12,355,264
Oth Exp	1,442,262	1,867,469	1,681,698	1,440,536	2,228,858
<b>Total Exp</b>	<b>13,654,804</b>	<b>13,653,599</b>	<b>14,635,375</b>	<b>14,882,929</b>	<b>14,955,760</b>

# 2008-09 Organizational Chart



# Major Accomplishments (2007-08)

- **New degree programs**
  - Motorsports Engineering-BS
  - 5-year BS/MS program and a dual BSEE/BS in Physics program
  - Online MS degree in Facilities Management
- **ASEE National rankings (2007)**
  - Third place for technology BS degrees awarded
  - First place for technology BS degrees awarded to women
  - Third place for technology student enrollment
- **Transfer agreements**
  - Ivy Tech, Franklin College, and IU East
  - HCIT (Malaysia) and CNA (Canada and Qatar)

# Major Accomplishments

- **School received record research funding of \$6.2M**
  - Ghassan Kassab, NIH-NHLBI, “The Role of Shear Stress in Heart Failure”, \$359,952. This is a five-year R01 grant from NIH totaling to \$1.8M.
  - Ghassan Kassab, FlowCo, Inc., “Impedance Planimetry Device Pre-Clinical Validation”, \$233,500.
  - Razi Nalim, Rolls Royce Corporation, “Wave Rotor Combustion Rig Design and Analysis”, \$200,000.
  - Sohel Anwar, Indiana Office of Energy, “Plug-in Hybrid Electric Vehicle (PHEV) Development”, \$132,392.
- **Two new Signature Centers were created.**
  - Transportation Active Safety Institute (TASI)
  - Biomechanics and Biomaterials Research Center

# Major Accomplishments

- **Accreditation**

- Interior Design Technology-BS program received full 6-year accreditation from CIDA.
- ABET reaccredited Electrical Engineering and Computer Engineering programs.

- **Our students**

- Fourteen of the 2007 IUPUI Top 100 students were from our school.
- Four of our students made it to Top 10 Man and Top Ten Women list.
- Rachel Meyer (BME) was selected as the Top IUPUI Female student.

# Major Accomplishments

- **Faculty recognition**

- Brian King , Steve Rovnyak, and Dong Xie received tenure.
- Brian King, Steve Rovnyak, and Rob Wolter were promoted.
- Charles Turner became the second Chancellor's Professor in the school.
- Ken Rennels was elected to the ABET Board.
- Pat Fox received ASEE McGraw Hill Award.

- **Successful summer programs**

- MEAP , Indiana Summer Transportation Institute, and Pathways to Engineering Camp
- TECH Camp and Power Camp
- Motorsports summer program
- International research internship program at IUPUI
- CGT program in Poland (UITM and UCM)
- OLS programs in Germany and Mexico



# Priorities for 2008-09

- **Budget**
  - Balancing the base budget
  - Cash flow
- **Targeted enrollment increase**
  - Recruit more minority and women students
- **Targeted research expansion**
  - Signature Centers and new strategic areas
- **Marketing of the school**
  - New School Website
  - Work with marketing firm
  - Special marketing of motorsports engineering

# Priorities-2

- **Quality**

- Initial ABET accreditation visit (CIT and CGT programs)
- Accreditation of Music Technology Program

- **Diversity**

- Closer collaboration with campus

- **Space**

- Planning for IUPUI Innovation Center
- Renovation of ET 201 and ET 202 areas
- Replacement of ET Building roof
- Renovation of SL labs and classrooms

- **Engagement**

- Building up department and school plans for fundraising
- I-STEM
- Closer connection to business and industry

# Priorities for 2008-09

- **Budget**
  - Balancing the base budget
  - Cash flow
- **Targeted enrollment increase**
  - Recruit more minority and women students
- **Targeted research expansion**
  - Signature Centers and new strategic areas
- **Marketing of the school**
  - New School Website
    - <http://www.engr.iupui.edu/index.shtml>
  - Work with marketing firm
  - Special marketing of motorsports engineering

## Important Dates

- September 12, E&T Golf Outing, Saddlebrook Golf Course, Registration 11 AM; Start 12:30
- October 17, 2008: Joint Board of Advisors Retreat, Rolls Royce Training Facility, 12:00 p.m. – 4:30 p.m.
- December 4, 2008: DIAC Meeting, Schumacher Racing, 3:30 – 5:30 p.m.