



# The State of the School IU School of Liberal Arts at IUPUI

Robert W. White  
September 29, 2006

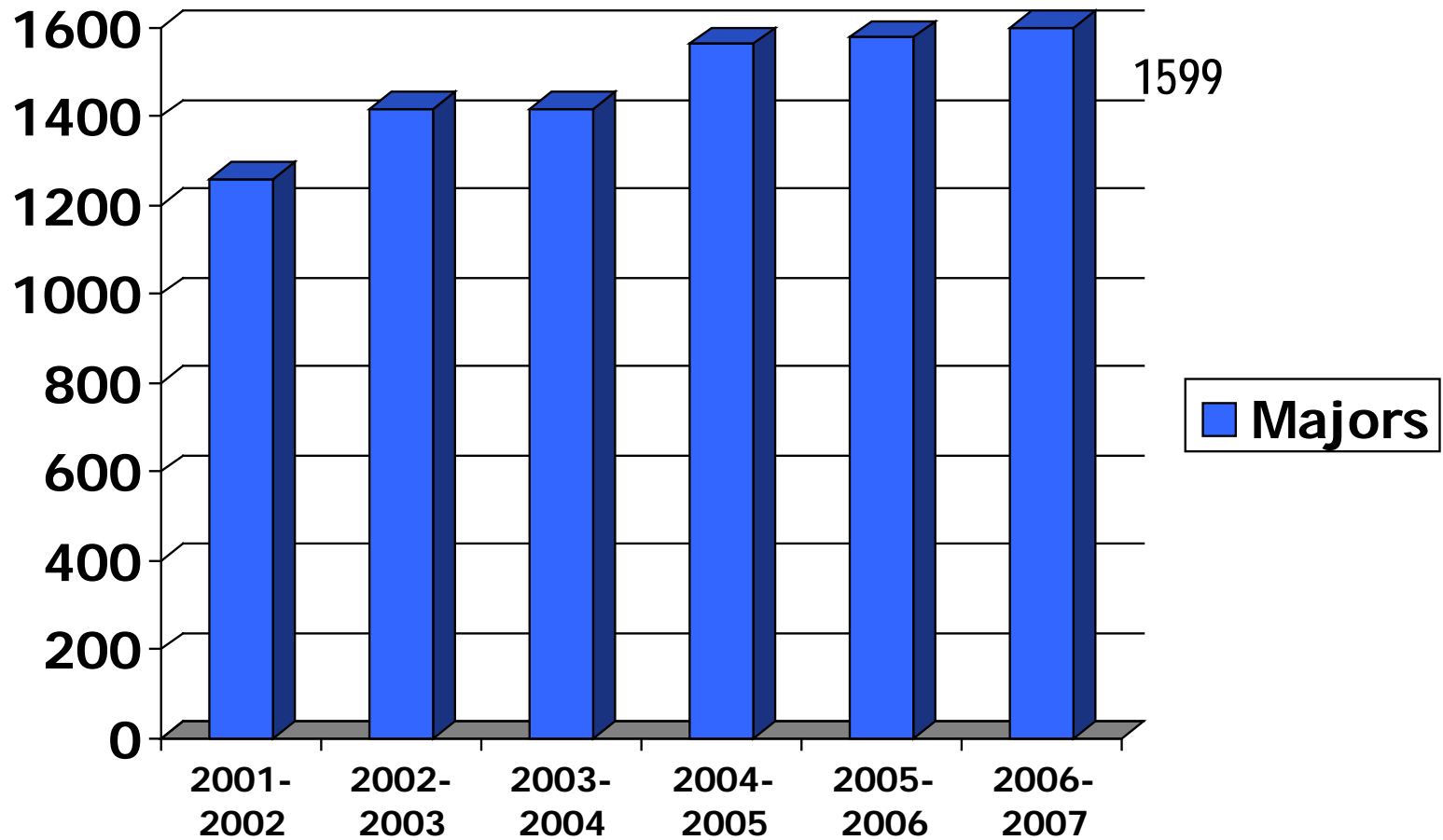
# Liberal Arts Faculty Fall 2006\*

	Tenure-Line			Lecturers		Total
	Assistant	Associate	Full	Lecturers	Senior	
Total	25	66	47	49	13	200
Male	11	40	33	22	2	108
Female	14	26	14	27	11	92
Under-represented Minorities	7	9	2	4	2	24

*Excludes faculty with full-time administrative appointments outside the School.*

\*Unofficial data

# Liberal Arts Undergraduate Students \*



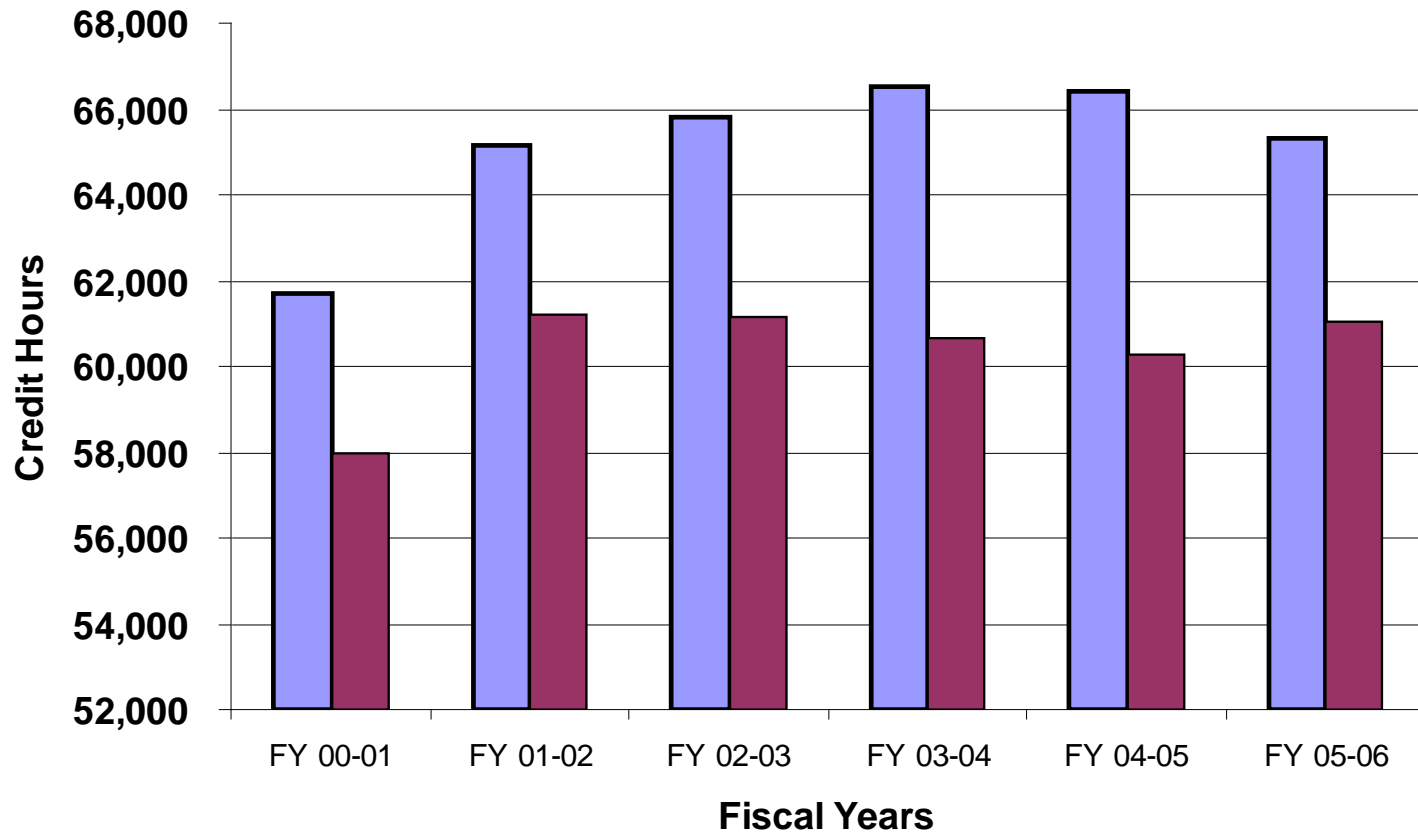
\* At fall census

# Liberal Arts Undergraduates by Department Fall 2006 \*

Department	Majors	Department	Majors
Political Science	343	Economics	45
Communication Studies	267	Geography	39
English	257	Individualized Major	27
History	157	ASL/English Interpreting	22
World Languages	137	Religious Studies	22
Anthropology	115	Associate of Arts	15
Sociology	103		
Philosophy	50		
		<b>Total</b>	<b>1599</b>

\* At census/unofficial figures; includes certificate programs.

# Liberal Arts Credit Hour Enrollments



# Student Characteristics, Fall 2006\*

	<u>In-State</u>	<u>Out of State</u>	<u>Total</u>
Total Number of Students	1816	80	1896
Undergraduate	1570	29	1599
Graduate	246	51	297

Average age of all students 27

Of Undergraduate Students: 57% are 24 years old or less

Of Undergraduate Students: 62% are female

52% of our majors have taken all of their hours at IUPUI/IU

\*Unofficial Data

# Undergraduate Student Characteristics, Fall 2006\*

Native American	.5%
Asian	2%
African American	12%
Hispanic	3%
International	1%
White	79%
Unspecified	2%

\*Unofficial Data

# Graduate Students

	2000-2001	2001-2002	2002-2003	2003-2004	2004-2005	2005-2006
<b>Enrolled in Fall</b>	92	114	146	192	268	354
<b>Students Admitted</b>	40	90	78	106	118	137
<b>Average GPA</b>	3.51	3.36	3.46	3.30	3.51	3.48
<b>Average GRE</b>	V: 565 Q: 607	V: 557 Q: 590	V: 547 Q: 587	V: 545 Q: 596 W: 5.15	V: 532 Q: 558 W: 4.69	V: 538 Q: 587 W: 4.73



# Grant Applications

2005-2006: 101 proposals, 64 funded (\$9,004,411)

2004-2005: 85 proposals, 59 funded (\$11,174,363)

2003-04: 89 proposals, 58 funded (\$11,358,274)

2002-03: 65 proposals, 51 funded (\$4,265,767)

# Development (FY2005)

Dollars raised\* \$1,929,170

Number of Donors 1,187

Alumni 505

Friends 572

Corporations 24

Other 86

Highlights

Masarachia estate gift

# The State of the Budget

# Salary Increases: 2006-07

Overall average salary increase for full-time faculty: 3.22%

Average salary increase for faculty with exclusions: 10.59%

Average salary increase for faculty without exclusions: 2.35%

Professional staff: 2.30%

PA's 2.30%

PAO's 2.30%

Bi-weekly staff: 2.70%

# Budgeted Income and Expenditures 2006-2007

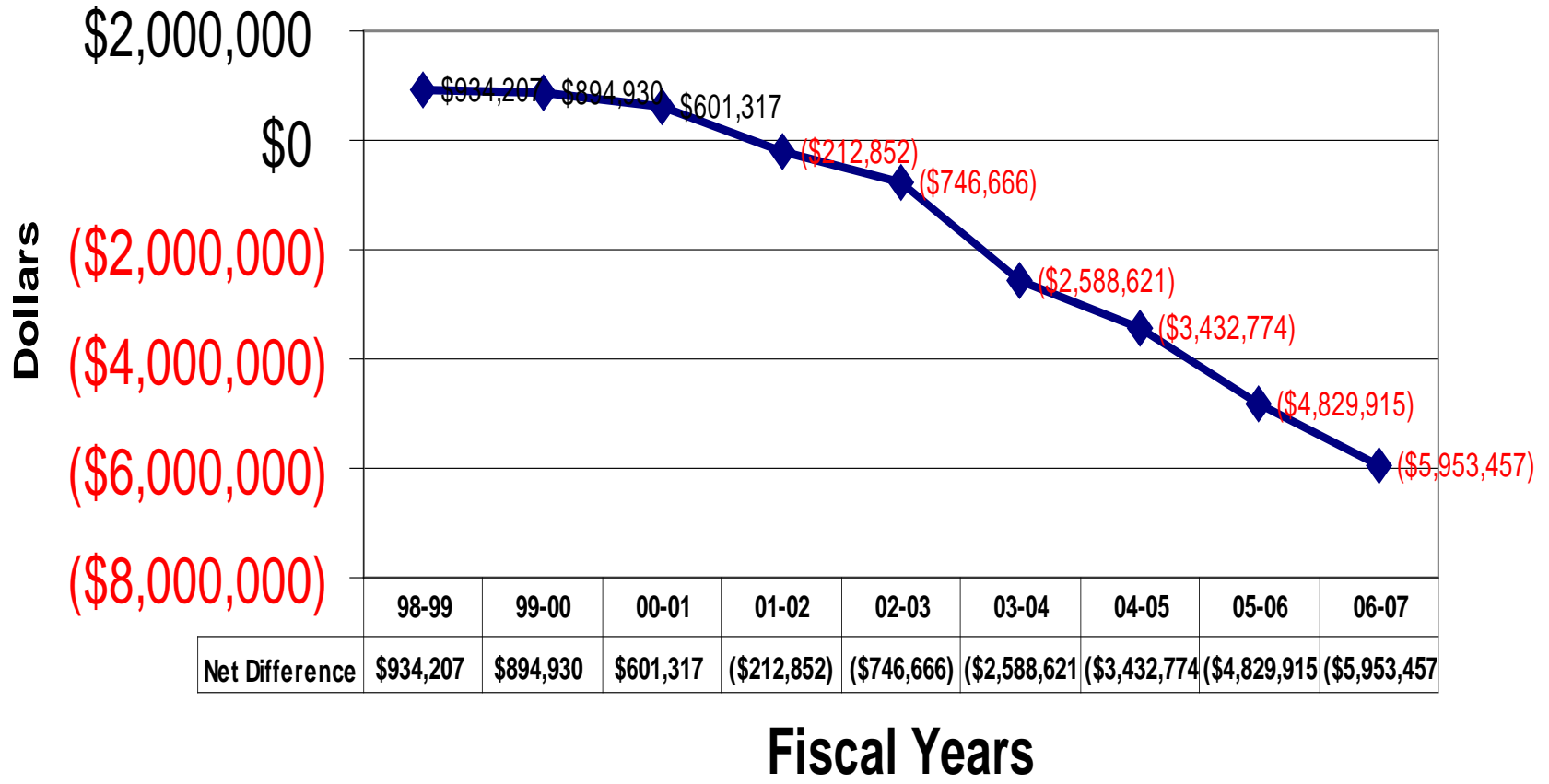
## PROJECTED INCOME

TUITION & FEES	\$29,260,424	
STATE APPROPRIATIONS	\$ 5,536,845	ICR = \$925,000 - \$185,000 TAX = \$740,000
F/A (ICR \$)	\$ 925,000	
CAMPUS ASSESSMENT	(\$11,490,301)	STATE APPROPRIATIONS – ASSESSMENTS = (\$5,953,456)
	=====	
TOTAL	\$24,231,968	

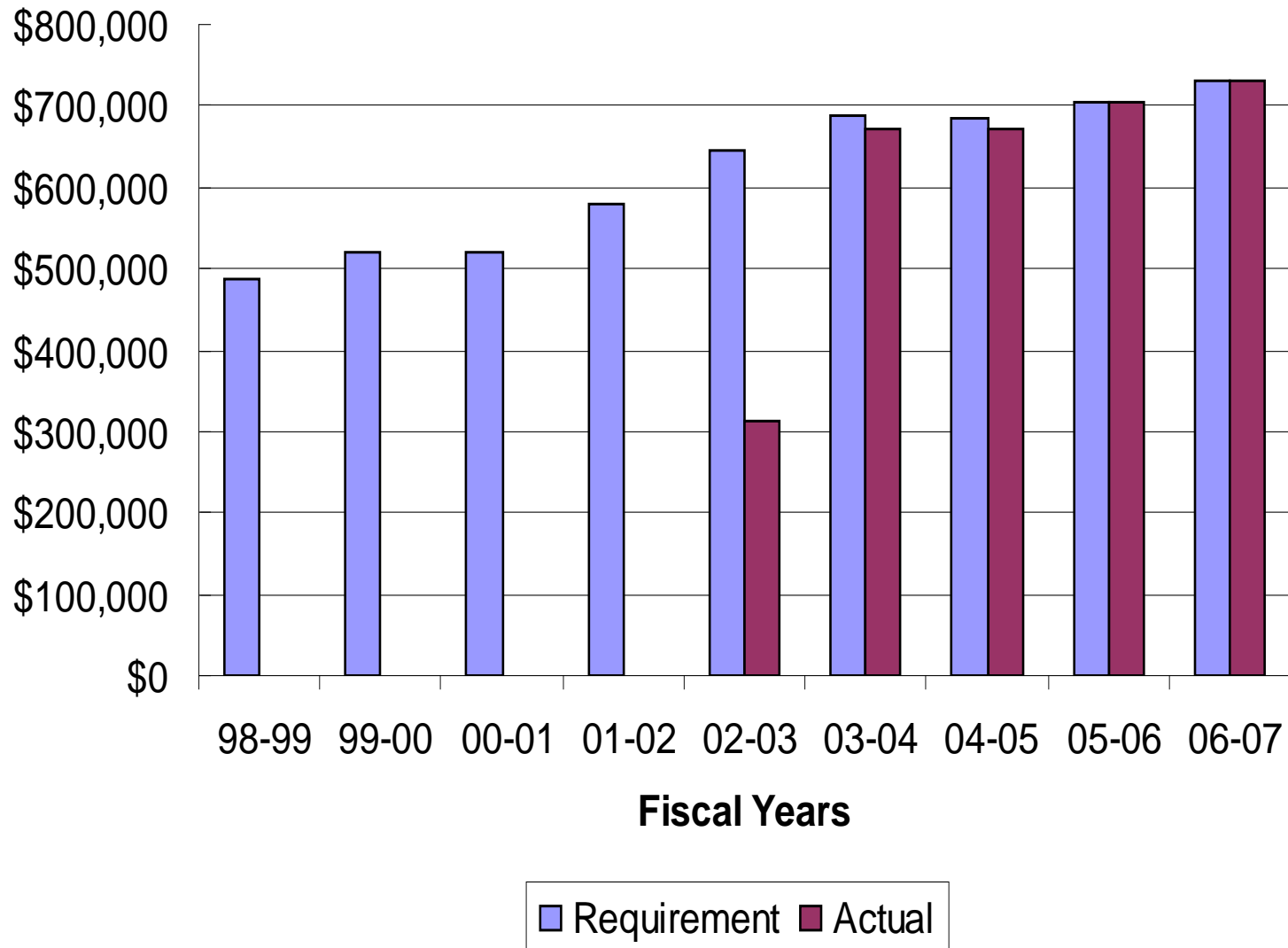
## PROJECTED EXPENDITURES ON GENERAL FUNDS

SALARIES & BENEFITS	\$21,083,368
FINANCIAL AID	\$ 430,000
GEN EXPENSES	\$ 1,385,502
TRAVEL	\$ 193,303
CAPITAL	\$ 5,000
RESERVES	\$ 151,796
TRANSFER OF FUNDS	\$ 982,999
	=====
TOTAL	\$24,231,968
Income – Expenses	\$ 0

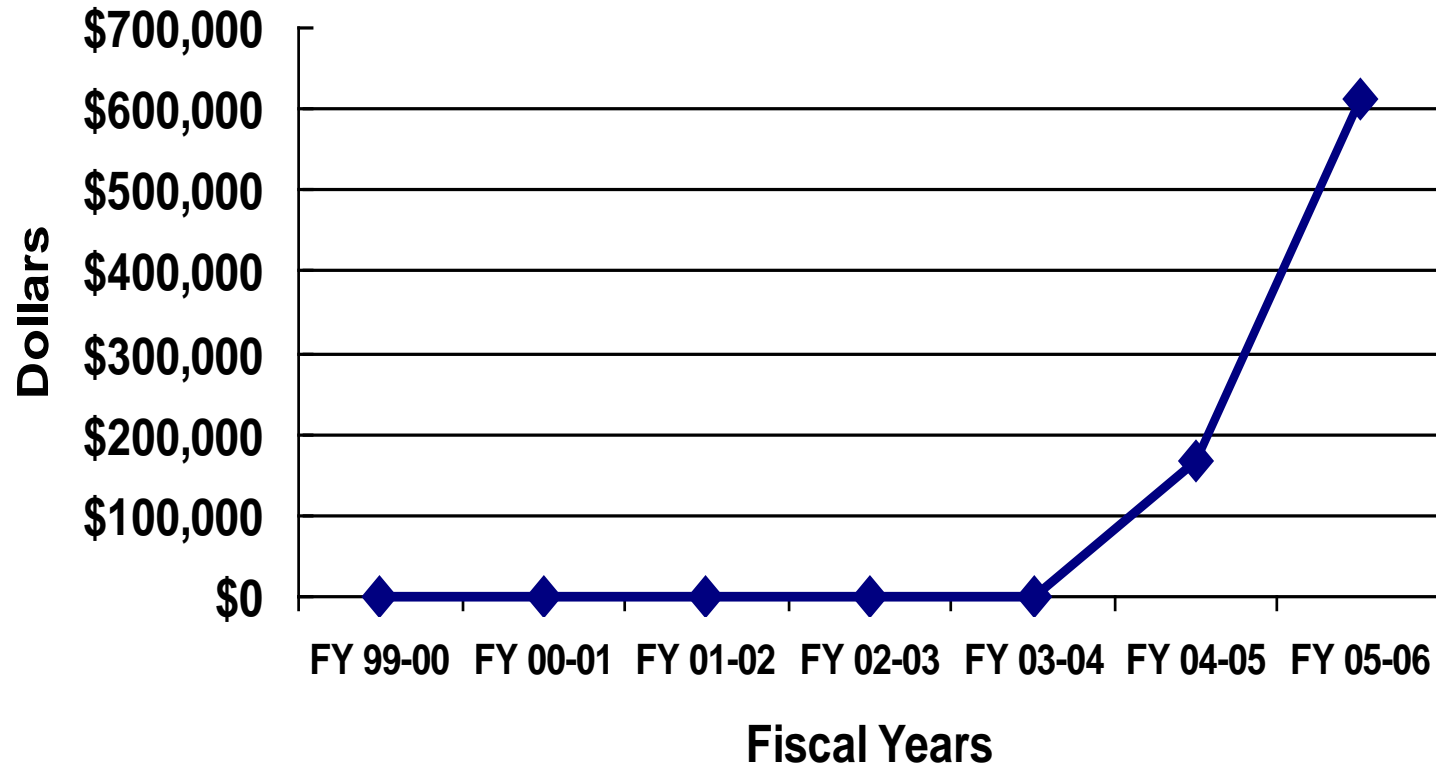
# IU School of Liberal Arts: Appropriations & Assessments By Fiscal Year



# IU School of Liberal Arts: Rainy Day Fund



# IU School of Liberal Arts: Reserve Fund



◆ Reserve Fund Dollars



# New Chairs/Center Directors

Anthropology:	Paul Mullins
Economics:	Paul Carlin
English:	Susanmarie Harrington
History:	Bob Barrows
Philosophy:	John Tilley

National Council of Public History: John Dichtl

# Into the Future

BA in International Studies is approved and  
underway

Transition of the School of Journalism

Labor Studies

Signature Centers

Internships and the Campus Center

Questions?