



112 West Water Street  
Paoli, IN 47454

Phone: 812-723-4150  
Fax: 812-723-7304  
[www.occf-in.org](http://www.occf-in.org)

*Proud to be  
Orange...*



**ORANGE COUNTY  
COMMUNITY FOUNDATION, INC.**

**Annual Report to the Public**

*Fiscal Year 2014-2015*

*We're proud to be  
Orange!*

Orange County is not just our home, but a unique and beautiful place on the Hoosier landscape. There is no community quite like Orange County, and no people quite so gloriously independent as the people here.

In 2015, the Orange County Community Foundation, Inc. unveiled its updated logo, sporting a bright splash of the orange we're so very proud to be a part of.

## YEAR-END FINANCIALS

Combined Statement of Activity  
September 30, 2015

<b>Public Support and Revenues</b>	
Public Support/Contributions and grants	\$ 995,321
Revenue	
Realized and unrealized gains on investments	(586,951)
Administration fees	231,724
Investment income	338,671
Rental/overhead charge	16,600
In-kind revenue	109,668
Other income	0
Net assets released from restrictions	<u>483,009</u>
<b>Total unrestricted revenues and support</b>	<b>\$1,588,042</b>
<b>Expenses</b>	
Program	
Scholarships and grants	662,879
Administration fees	231,724
Pass-through fund expense	83,057
Scholarship management expense	1,248
Management and General	
Payroll and payroll tax expense	211,419
Employee benefits	44,928
Professional and consulting fees	38,748
Programming	34,500
Marketing and special events	7,188
Conferences and meetings	9,773
Website and equipment maintenance	5,160
Depreciation	6,611
Insurance	4,193
Occupancy	5,630
Interest	4,665
Printing and reproduction	4,789
Dues and subscriptions	2,404
Postage and shipping	2,575
Telephone	2,323
Supplies	2,740
Community programs	4,008
Bank services charges/credit card terminal	1,580
In-kind expense	4,868
Property tax	15
Reimbursed expenses	<u>(51,641)</u>
<b>Total expenses</b>	<b>\$1,325,384</b>
<b>Net change in unrestricted net assets</b>	<b>\$ 262,658</b>

## YEAR-END FINANCIALS

### Combined Statement of Financial Position September 30, 2015

#### ASSETS

Cash and cash equivalents	\$1,128,990
Investments	8,369,540
Investments-land and building	0
Accounts and contributions receivable	34,513
Property and equipment (net of accumulated depreciation)	180,825
<b>Total assets</b>	<b>\$9,713,868</b>

#### LIABILITIES AND NET ASSETS

##### Liabilities

Accounts payable	\$ 3,908
Accrued expenses	11,410
Scholarships and grants payable	0
Deferred revenue	67,052
Mortgage payable	<u>112,552</u>
Total liabilities	194,922

##### Net assets

Unrestricted net assets	
Unrestricted funds	6,619,586
Donor-advised funds	561,102
Donor-designated funds	194,416
Temporarily restricted net assets	1,334,667
Permanently restricted net assets	<u>809,175</u>
Total net assets	<u>9,518,946</u>

**Total liabilities and net assets**      **\$9,713,868**

## Table of Contents

From the President	4
From the Executive Director	5
Philanthropists of the Year	6
Lilly Community Scholar	7
Local Beautification Efforts	7
OCCF Youth Council	8
Orange County Women's Giving Circle	9
Hometown Collaboration Initiative	9
Our Vision, Mission and Values	10
Lilly Endowment, Inc. Match	11
Community Scholarship Recipients	12
Grants	14
List of Current Funds	16
Staff	18
Board of Directors	20
Financial Statements	22

*We bleed  
Orange...*



We love Orange County so much, we bleed orange. Well, maybe not literally...but Orange is definitely where our hearts are.

Over the past few years, as I have served as President of the Orange County Community Foundation Board of Directors, I have learned many things about Orange County. Mainly, that that this is an incredible place, and that the people here are equally incredible. I've met many true philanthropists, people who are lovers of mankind in the deepest and most profound sense. These people give of their time, talent and treasures for the good of their fellow Orange Countians; they create and develop projects that benefit those in need, those seeking to succeed, and those who share their philanthropic dreams for Orange County.

Philanthropy at its finest is born in the human heart, and each and every one who gives of himself or herself in some meaningful way serves as an inspiration to all of us.

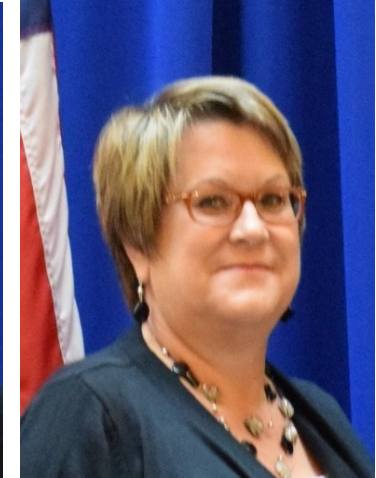
The joy of giving and of seeing the results of charitable acts is immeasurable, and I encourage everyone to join in the efforts begun by the donors who have made the Orange County Community Foundation a reality...those whose dreams of a bright, strong future for Orange County are coming true.

*Linda Gerkin*  
President, OCCF Board of Directors

### OCCF STAFF



**IMOJEAN DEDRICK**  
*Executive Director*



**CATHY HARDIN**  
*Manager of Finance and  
Administration*



**LAUREN GOODMAN**  
*Finance and  
Program Associate*



**CAROLYN CLEMENTS**  
*Administrative Assistant*

### OCCF BOARD OF DIRECTORS



Linda Gerkin  
President



Brett Busick  
Vice President



Larry Hollan  
Secretary



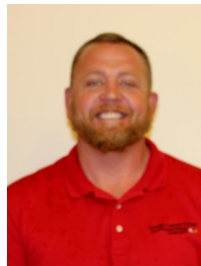
Shane Buffington  
Treasurer



Sandy Blanton



Don Brewer



Billy Chastain



Miles Flynn



Susan Gilmore



Peter Grigsby



Todd Hitchcock



Glenda Lamb



Mike McCullough



Marsha Tellstrom

Not pictured:  
Pete Conrad



*Forever  
Orange...*

Since its inception in 1996, the Orange County Community Foundation, Inc. has been striving toward the enrichment of the Orange County community, and those efforts will never stop.

Through the funds endowed with the Foundation by our generous and caring donors, we can and will continue to provide charitable support throughout Orange County forever. Long after the present staff and Board of Directors have moved on, the Foundation—your foundation—will continue to seek ways in which those charitable funds can provide programming and projects that will serve the needs of Orange County and address the issues facing us here.

Over the past few years, the Foundation’s role has grown. We’ve moved beyond being simply fund administrators, and we are constantly looking for ways in which we can enrich the lives of those who call Orange County home, seeking avenues of advancement for worthy programs and projects, and searching for ways in which we can build a stronger and more equitable community for everyone here.

As we look forward to 2016 and beyond, your gifts insure that the Orange County Community Foundation will continue for good, forever, for Orange County.

*Imojean Dedrick*  
Executive Director



**COL. WILLIAM WILLIS**  
*2015 Philanthropist of the Year*

Retired from the U.S. military, Col. William "Bill" Willis has served Orange County in so many ways. He has participated or led a number of patriotic groups, headed up the local Gideons organization, and served his local Lions Club on nearly every level. Founder of the annual Liberty Day event locally, Willis has been instrumental in providing school children county-wide with copies of historic U.S. documents and educating them regarding their American heritage.



2015 Board planning meeting and training session



2015 Annual donor appreciation event



2015 Larry Hollan holiday open house event

**MILES FLYNN**  
*2014 Emerging Philanthropist*

As Managing Editor of Orange County Publishing, Miles Flynn has offered fair and balanced journalism to Orange County for some time, but his contributions to the area extend well beyond his editorial duties. After many years, he once again involved Orange County schools in the National Spelling Bee program, encouraging students county-wide in their



pursuit and appreciation of the English language and its proper usage. Miles has given his time and talent to a number of organizations throughout the county, as well.



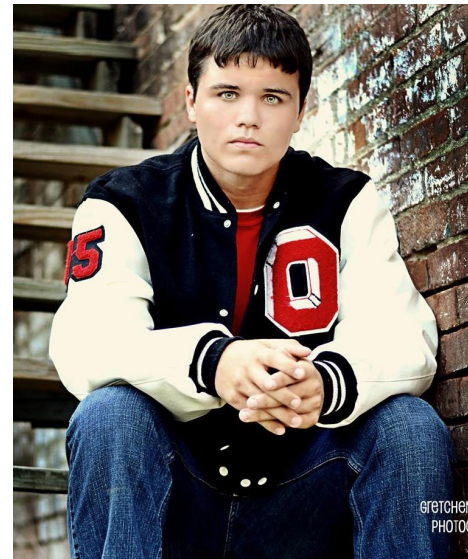




Staff members Cathy Hardin (left) and Imojean Dedrick (second from right) completed Ball State University's Community Development course in May, 2015.



Staff members (left to right) Lauren Goodman, Imojean Dedrick, Carolyn Clements, and Cathy Hardin



**BURTON GERKIN**  
*2015 Lilly Community Scholar*

Burton K. Gerkin, son of James and Jodi Gerkin, was chosen as the 2015 Lilly Community Scholar. A valedictorian at Orleans High School, Burton's activities included varsity basketball, baseball, and cross country. He also participated in the National Honor Society, Fellowship of Christian Athletes, Pep Club, and French Club, as well as team captain of the Math Team that reached state finals in 2014. An Eagle Scout and Patrol Leader in Boy Scouts, and president of the Lucky Dawgs 4-H

Club, Burton spends his summers working as a hand on the family farm; and he somehow finds time to be an active member of Syria Christian Church and a part of the youth group at Orleans Christian Church. Burton is currently a Freshman at Rose Hulman Institute of

**KEEP ORANGE COUNTY BEAUTIFUL!**

*Local Beautification Efforts*

Thanks to grants from the Smithville Charitable Foundation and gifts from local donors, OCCF has been able to provide funding for efforts to clean up Orange County. To date, more than \$72,000 has been expended for recycling and cleanup promo-

tions, volunteer county-wide cleanup campaigns, TV Amnesty days, cleanup of illegal dumpsites and signage for such areas, and to provide containers at rural recycling and trash-collecting areas.

The 2015 TV Amnesty Day alone represented the five-year culmination of more than 44 tons (88,000 pounds) of unused TVs, computer monitors, and other electronic equip-



ment being removed and subjected to ecologically-sound disposal.

Our partner in these efforts, Orange County Recycling, deserves a great deal of credit, as well. We thank them for their efforts on behalf of Orange County.

## OCCF YOUTH COUNCIL

The Youth Council, now more than 40 strong, continues its philanthropic activities throughout the county—assisting with Backpacks programs, teaching philanthropy in the 4th grade classroom, ringing bells for the Salvation Army, and more. Learning to become philanthropists, the group also provides grant-funding to local charities through its own unrestricted endowment fund.



Youth Council members pose during bell-ringing activities for the Salvation Army.



### 2015 GOLDEN DEEDS RECIPIENTS

Sponsored each year by the OCCF Youth Council, Golden Deeds recognizes those throughout Orange County who give of their time, talent and treasure to help others. This year's recipients were Luke Aylsworth, Amanda Bush, Jamie Collins, Penny Harner, Jennifer Hill, Rebecca Hill, Ralph Wildman, and Rachel Wyatt. Honorees are shown here with members of the Youth Council at the recognition event at which they received trophies and certificates.

Delta Chapter Kappa Kappa Kappa  
 in Honor of Elinor Gardner Jones  
 Memories of Our Mothers (Mom)  
 Justin Moon Memorial  
 Moore Family  
 in Memory of Sandra Moore Pearson  
 Leon and Mary Newlin Lewis  
 Memorial  
 Leon and Eva Johnson Memorial  
 Justin Mullis Memorial  
 James M. Thompson Memorial Voc.  
 Orange County Child Care Co-Op  
 Paoli Meridian Lions Club  
 Paoli High School Alumni  
 Simmons Scholarship  
 George and Evelyn Sorrells Memorial  
 Cindy Stephenson Memorial  
 Sugarman Scholarship  
 Syria Christian Church Designated  
 Dr. E.T. Uyesugi Memorial  
 Orleans School Foundation Desig.  
 Newlin-Stout Scholarship  
 David A. Miley Memorial  
 Rosetta Mae Atkinson Memorial  
 Russell D. Doan Memorial  
 Ray Gardner Memorial  
 Smithville Charitable Foundation  
 USS Chimaera Star Trek Club  
 Leonard and Janet Vaught  
 Kerry Wyatt Memorial

### *Unrestricted*

William and Connie Jenkins  
 OCCF General Endowment (Share the Love)  
 OCCF Youth Council  
 Simmons Unrestricted  
 Brown Family  
 Tegarden Unrestricted  
 Add and Mabel Gray Estate

### *Non-Permanent (Pass-thru) Funds*

Good Samaritans  
 Town of Paoli  
 OCCF Youth Council  
 OCCF Scholarships  
 Big Splash Water Park  
 Louis and Lenora Allen Memorial Scholarship  
 John Brown Jr. Memorial Scholarship

Cpl John D. Cook Memorial  
 Scholarship  
 Mary Beth Cornwell Memorial  
 Scholarship  
 Hoosier Hillside Master Gardeners  
 Scholarship  
 Paoli, Inc. Donor-Advised  
 Nofziger Family Fund  
 Chuck Akers Memorial  
 Keith Howard Memorial Scholarship  
 Stephanie Babcock and Bailey Cart  
 Memorial Scholarship  
 Arminta Sue Wagner Memorial Scholarship  
 IUH-PH Foundation Scholarship  
 Memories of Our Mothers  
 Sugarman Scholarship  
 Moore Family Scholarship in  
 Memory of Sandra Moore Pearson  
 Justin Mullis Scholarship  
 James Thompson Scholarship  
 Justin Moon Scholarship  
 Jared Hammack Scholarship  
 Alan Barnett Scholarship  
 Fred and Ethel Crowe Award  
 French Lick Artisans  
 French Lick-West Baden Museum  
 Add and Mabel Gray Estate  
 Pivotal People of Southern Indiana  
 SV Education Foundation  
 Community Closet  
 Friends of Paoli Public Library  
 Backpacks of Blessings  
 Blackhawk Blessings  
 Bulldog Backpacks  
 Running Start—Paoli  
 Running Start—Springs Valley  
 Throop Elementary School PTO  
 Throop Elementary School Sixth Grades  
 Johnnie Robbins for Boy Scouts  
 Gazarian Birthday Fund  
 Healing Arts Center  
 OCCF Operating

### *Supporting Organizations*

Orange County Commissioners  
 Sol Strauss Trust



## CURRENT FUNDS

### *Donor-Advised*

Hollis Denbo Family  
James Farlow and Mabel Miller  
F. Wendell and Helen M. Gooch  
Dr. Luke and Mrs. Donna  
Mosemann  
Paoli, Inc.  
Clements Family  
Nice-Riester Family  
Smithville Charitable Foundation

### *Field of Interest*

OCCF Education (CAPE)  
Orange County Child Care Co-Op

### *Designated*

Backpacks of Blessings  
Virginia Combs Literacy  
Good Samaritans  
Dallas Tyler (Town of Orleans)  
Saving Historic Orange County  
Springs Valley Education  
Foundation  
Fred and Ethel Crowe Education  
Award  
French Lick-West Baden Museum  
First Chance Center  
Friends of Tots to Tots  
Melton Public Library  
Orange County 4-H Clubs  
Association  
IU Health Paoli Hospital  
Foundation  
Orange County Historical Society  
William and Mildred Hoke  
Orange County Humane Society  
Hackney-Ferguson Fund  
Orange County Players  
Wonder Valley Christian Assembly  
Orange County Chapter D.A.R.  
Orange County Habitat for  
Humanity  
Delta Chapter Kappa Kappa Kappa

Orleans School Corporation  
Orleans Town and Township Public  
Library  
Orleans Christian Church Perpetual  
Memorial  
Paoli Christian Church Perpetual  
Memorial  
Friends of Paoli Public Library  
Martin Family Fund for Paoli Public Library  
Paoli 1st Presbyterian Church  
Perpetual Mem.  
Paoli School Corporation  
Rutherford Fund for Lynd Schoolhouse  
Running Start  
Southern Indiana Health Care, Inc.  
Springs Valley School Corporation  
Throop Elementary School PTO  
Paoli Mennonite Fellowship Missions  
Paoli Mennonite Fellowship Operations  
David K. Ross Fund for OCCF  
Youth Council  
Irvin Mefford Memorial  
William & Sylvia Kearby and  
Elwood & Alma Walters Memorial  
Chuck Akers Memorial  
Kelly Tow Fund  
OCCF Operating Endowment

### *Scholarships*

Alan Barnett Community Service  
Lewis and Lenora Allen Memorial  
James A. Babcock Memorial  
Stephanie Babcock and Bailey Carty Memorial  
Anita Bradford Art  
Bradley, Henderson, Humphrey, Puckett  
IU Health Paoli Hospital Foundation  
Dr. Robert J. Cloud Citizenship Award  
Don and Dody Conrad Agriculture  
Cpl John D Cook Memorial  
Joseph Crowder Memorial  
Donnie Martin Memorial  
Charles and Violet Galloway Memorial  
Clarice (White) Bridgewater Memorial  
French Lick High School Alumni  
Association  
Maud Anna Ham  
Jared Hammack Memorial  
Margaret Houston Memorial

## WOMEN'S GIVING CIRCLE

The Orange County Women's Giving Circle is going strong, this year raising thousands of dollars through golf tournaments, girls' night out, and other activities to assist those who are uninsured or underinsured with the costs of diagnostic procedures related to breast cancer, ovarian cancer, and other female-related diseases.

In 2015, the group supported Jubilee Health Care and worked with IU Health Paoli Hospital in providing free mammograms to women whose insurance did not cover the diagnostic test. More than \$14,000 has been given by the Giving Circle toward providing women throughout Orange County with the health care and testing not provided by insurance.



## HOMETOWN COLLABORATION INITIATIVE



The Foundation was very pleased to accept on behalf of Orange County participation in the Office of Community and Rural Affairs' (OCRA) Hometown Collaboration Initiative (HCI). Staff members Imojean Dedrick and Cathy Hardin were present-

ed with the award by Lt. Gov. Sue Ellspermann at a ceremony at the State House in December. HCI will provide much-needed guidance and expertise from OCRA, Ball State University, and Purdue University in determining viable pathways to economic, community and leadership development for Orange County. Once that is accomplished, the HCI program will direct leadership and community citizens toward the best ways of achieving goals and creating programs and policies that will benefit the county. The Foundation is very proud to be a part of this exciting initiative, and equally proud to have applied for it on the county's behalf.

## OUR NEW MISSION AND OUR VISION FOR ORANGE COUNTY...

In order to more fully represent the Orange County Community Foundation, Inc.'s role in Orange County, the Board of Directors voted in 2015 to change the organization's vision, mission and case/value statement.

### *Vision*

Shaping the future through philanthropy by helping donors find the causes they love, building a stronger community, and leading with bold solutions.

### *Case/Value Statement*

The Orange County Community Foundation, Inc. advances innovative philanthropic solutions to challenging problems, engaging donors to make our community a better place for us all. The Orange County Community Foundation, Inc. is a comprehensive center of philanthropy. Through visionary leadership and strategic grant-making, we strive to strengthen the common good through Orange County.

We value:

- Community
- Collaboration
- Diversity
- Inclusiveness
- Innovation
- Integrity
- Public Accountability
- Respect
- Responsiveness

### *Mission Statement*

Building a better community—together.

We strive to carry out this mission in the following ways:

- As a steward—by developing and managing permanent endowment funds which fund community improvements and support charitable causes.
- As a strategic grant-maker—by awarding grants and other support to enable the community to respond to emerging and changing needs and opportunities.
- As a charitable resource—by encouraging and educating donors and providing a flexible vehicle for individual donors, charitable organizations, and the community at-large.
- As a catalyst—by mobilizing community leadership in response to issues.

## 2015 GRANTS RECEIVED

*Indiana Philanthropy Alliance*

Intern Grant — \$10,327.79

*Independent Colleges of Indiana*

Scholarship Admin Grant — \$6,500

*Lilly Endowment, Inc.*

Matching Grant Funds — \$500,000

*Smithville Charitable Foundation*

Beautification Grant — \$20,000

Community Parks Projects Grant — \$30,000

Discretionary Grant — \$2,380.80

*Old National Bank Foundation*

Discretionary Grant — \$1,000

*OCCF Operating Endowment*

Operating Grant — \$3,165.52

## 2015 GRANTS PROCURED FOR THE COMMUNITY and GRANTS ASSISTANCE

*Place-Based Investment Funds*

Town of Orleans park stage project

*Hometown Collaboration Initiative*

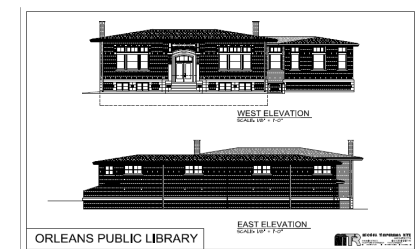
Orange County Planning/Directives

*Community Block Development Grant*

Orleans Library Expansion Project



Through strategic and pro-active grant-making, the Orange County Community Foundation can make a bigger impact on the lives of the people of Orange County and go further toward enriching life here in our home county.



**2015 GRANTS AWARDED**

*Orange County Child Care Co-Op Endowment Fund*

Mercy Center  
Backpacks of Blessings  
Blackhawk Blessings  
Bulldog Backpacks

*OCCF Education Fund/CAPE*

School Placement Testing  
Community Garden Project  
Orange County Spelling Bee  
Hoosier Uplands Head Start

*OCCF Unrestricted Fund with Peter Grigsby, Larry Hollan and Wendell Gooch Legacy Funds*

PGA Art Contest  
Orange County Bicentennial  
Mercy Center  
Orleans Public Library  
Orleans PBIF Project  
Grace Haven  
Jubilee Health Care  
Backpacks of Blessings  
Blackhawk Blessings  
Bulldog Backpacks

*Sol Strauss Supporting Organization*

Backpacks of Blessings  
First Chance Center  
Paoli Senior Citizens Center  
Running Start  
Throop School Nurse  
Throop Physical Ed Dept  
Throop Preschool  
Paoli Public Library  
Paoli Community Food Pantry

*Orange County Commissioners Supporting Organization*

Orleans Community School Corporation  
Paoli Community School Corporation  
Springs Valley School Corporation

*OCCF Youth Council*

First Chance Center  
Mercy Center  
Backpacks of Blessings  
Blackhawk Blessings  
Bulldog Backpacks

*Simmons Unrestricted Fund*

Orleans Public Library

*Tegarden Unrestricted Fund*

Orleans Public Library

**LILLY ENDOWMENT, INC.**

*Growing Orange County*

In August of 2014, Lilly Endowment, Inc. awarded the Foundation a \$500,000 grant to be used as matching funds for the growth of endowments and the advancement of community programs. By the end of fiscal year 2014-2015, the entire matching grant had been met, far ahead of many Indiana foundations.

For this achievement, we have the generous and giving people who support the funds held with the Orange County Community Foundation, Inc. and the work promoted through these funds, as well as those who support the various programs and projects provided through Foundation services throughout the community.

Your community foundation is recognized by regional and state organizations as a leader in philanthropic and community promotion; but nothing we do here would be possible without the support of you, our donors.

A heartfelt thank you to everyone who gave toward the Lilly GIFT VI matching fund initiative, and those who continue to support the work of the Orange County Community Foundation, Inc.

Without your kindness and generosity, the Foundation would be unable to meet its mission.





## 2015 COMMUNITY SCHOLARSHIP RECIPIENTS

*George and Evelyn Sorrells Memorial*  
Kayla Carson, Orleans High School

*UI Health Paoli Hospital Foundation*  
Hannah Lee, Orleans High School

*Leon Doyle and Mary  
Newlin Lewis Memorial*  
Kaitlyn Ingle, Paoli High School

*Leonard and Janet Vaught*  
Callie Mathers, Orleans High School

*Maud Anna Ham Memorial*  
Austin Longest, Paoli High School

*Orange Co Child Care Co-op*  
Adrianna Goldsberry, Orleans High School

*Big Splash Adventure Park*  
Emilee Waynick, Paoli High School

*Clarice White Bridgewater  
Memorial*  
Brandie Hankins, Paoli High School

*Russell O. Doar Memorial*  
Olivia Brewster, Paoli High School

*Sugarman Memorial*  
Ashley Johnson, Orleans High School

*Keith Howard Memorial*  
Harley Parsons, Springs Valley High School

*Armintha Sue Magner Memorial*  
Andrew Hawkins, Orleans High School

*French Lick High School Alumni*  
Mikayla Campbell, Springs Valley High School

*Joseph W. Crowder Memorial*  
Mikayla Campbell  
Kayle DeWeese  
Megan Greger  
Juan Ibarra  
Dakota Royer  
all of Springs Valley High School

*Justin Moon Memorial*  
Abigail Leonard, Paoli High School

*Moore Family in Memory of Sandra  
Moore Pearson*  
Cameron Shupe, Paoli High School

*Delta Chapter Kappa Kappa  
Kappa in Honor of Elinor Troth Gardner  
Jones*  
Melody Pinnick, Paoli High School

*Cpl. John D. Cook Memorial*  
Olivia Strother  
Paoli High School

*Paoli High School Alumni*  
Brett Balsmeyer  
Melody Pinnick  
both of Paoli High School

*Stephanie Babcock and Bailey  
Carty Memorial*  
Bailey Rankin  
Kaitlyn Ingle  
both of Paoli High School

*James M. Thompson Memorial*  
Steven South, Paoli High School

*Jared Hammack Memorial*  
Jonathan Wheeler, Orleans High School

*Justin Mullis Memorial*  
Kamen Ray, Orleans High School

*Rosetta Mae Atkinson Memorial*  
Allison Hedge, Paoli High School

*Hoosier Hillside  
MasterGardeners*  
Bailey Crowder, Springs Valley High School

*Mary Beth Cornwell Memorial*  
Nathaniel Burton, Paoli High School

*Donnie Martin Memorial*  
Cyrus Dodson, Paoli High School

*Newlin-Stout*  
Cyrus Dodson, Paoli High School

*Memories of Our Mothers*  
Kaitlyn Ingle, Paoli High School

*Paoli, Inc.*  
Bailey Rankin  
Brooklyn Dotts  
both of Paoli High School  
Jonathan Wheeler  
Steven Phillips, Orleans High School  
Elizabeth Orr, Springs Valley High School

*Springs Valley Education Foundation*  
Kristen Seitz  
Elizabeth Orr  
Bailey Bromstrup-Crowder  
Avaly Condra  
Chloe Carnes  
Daniel "Mitch" Nelson  
Harrison Burton  
Samuel Reynolds  
Kirsten Tomlinson  
(all of Springs Valley High School)

*Smithville Charitable  
Foundation Non-Traditional Scholarship*  
Mary Magner  
Marci Payton

*Dr. Robert Cloud Memorial Citizenship  
Award*  
Burton Gerkin, Orleans High School

*Dr. E.T. Uyesugi Memorial*  
Emma Walker, Paoli High School

