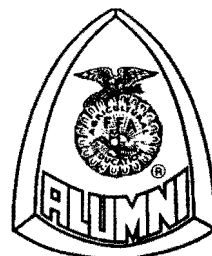


FFA

NEWSLETTER

Alumni Association



"FFA Alumni—
Supporters of Agricultural Education"

SPRING 1995

SPONSORED BY DODGE TRUCK

President's Message Ken Natzke, Bonduel, Wisconsin

The opportunity to give a presentation on the National FFA Alumni at a local Alumni affiliate banquet proved to be a very enlightening experience. I asked four couples at my table, "why are they involved with the FFA Alumni." They responded, "Our students are very important. The agricultural education teacher has too much to do to get everything accomplished."



The first couple were crop farmers. They are in charge of the crops judging team and develop field trips and educational programs so FFA members can get hands-on experiences. The second couple were dairy farmers. They help with dairy judging, fairs, product knowledge and hands-on experiences. The third couple, involved in agri-business, provide support for the speaking activities. Couple number four jokingly shared their "claim to fame" is the important one. They coordinate the fruit sale, the main fund-raiser for this affiliate. The \$4,000 raised is the major source of funding to send approximately 50 students to contest and leadership activities.

The most enjoyable part of this banquet was experiencing the pride these folks have in the achievements of their FFA members. They stressed that it takes time and a cooperative effort between the advisor and alumni to accomplish activities. Even though the students experience great personal growth, the alumni feel they are much better citizens for their efforts.

Alumni play an important role in agricultural education. Find a friend or two, get them to join and become involved. Enjoy being a part of developing our nation's leaders.

New Agri-Entrepreneurship Education Program

The National FFA Alumni Association has joined with the National Council for Agricultural Education and the National FFA Organization to promote increasing entrepreneurial instruction in agricultural education programs.

Part of this new Agri-Entrepreneurship Education Program is a one-time-only cash award of \$75 to the top student of each participating chapter. A condition of the cash award being sponsored by the Center for Entrepreneurial Leadership Inc., of the Ewing Marion Kauffman Foundation, Kansas City, Missouri, as a special project of the National FFA Foundation, is that the amount be matched by a local sponsor.

Encourage your local FFA advisor to participate in this program. Alumni members can help by providing ideas for the local chapter to match the cash award, as well as, assisting in selecting the chapter winner. "Intent to Apply" must be postmarked to the FFA Teacher Services Team by May 20 with student applications postmarked by June 2 and teacher/chapter applications by June 9.

Student agri-entrepreneurial success stories will become candidates for inclusion in a series of case studies that will accompany the new instructional materials on agri-entrepreneurship. All teachers of agricultural education will have access to these materials. We believe entrepreneurship skills received through agricultural education have been a factor in encouraging young people to start their own agri-business.

Teachers can also receive national recognition for incorporating entrepreneurship into their curricula. The top 200 teachers from across the country will be honored with a \$150 award to their chapter. The top ten student agri-entrepreneurs and the teachers who author the top ten teaching strategies will each receive \$1,000 during a ceremony at the national FFA convention.

For more information, contact Randy Bernhardt, Team Leader, FFA Teacher Services Team, 703-360-3600, ext. 311.

Inside This Issue

National FFA Alumni Council.....2	National Council Meetings3	Ideas for Developing Alumni Support ...5
Alumni MasterCard2	National Convention Activities.....3	An Investment in Tomorrow's Leaders5
Woody Cox/Special Recognition2	Auction3	Limited Edition ERTL Tractors5
New Delegate Registration Procedure ...2	Florida's Alumni Program4	1995 Executive Sponsors5
Successful Safety Fund-Raiser2	School Officials Luncheon/Workshop ...4	FFA Alumni Merchandise6-7
State Leaders' Conference3	New Life Members4	FFA Alumni Calendar8
Council Positions Elections3	Promotional Brochures Available4	Dodge Truck Ad8

1995 National FFA Alumni Council

PRESIDENT & CENTRAL REGION REP.

Mr. Kenneth Natzke
Rt 2 Box 26
Bonduel, WI 54107
(H)715-758-2718
(FAX)715-758-6435

VICE PRESIDENT

Dr. Ray V. Herren
629 Aderhold Hall, UGA
Athens, GA 30602-7162
(W)706-542-3898
(FAX)706-542-4054

PAST PRESIDENT

Mrs. June Dean
Rt 1 Box 727A
Wagoner, OK 74467
(H)918-462-3390

MEMBER-AT-LARGE

Mr. James W. Guilinger
FCAE
200 S. Fredrick Street
Rantoul, IL 61866
(W)217-893-0091
(FAX)217-893-0024

WESTERN REGION REP.

Mrs. Jeanea Lambeth
418 E. Rawhide Avenue
Gilbert, AZ 85296
(H)602-892-0993
(FAX)602-426-3659

EASTERN REGION REP.

Mr. James A. Shiflet
Rt 1 Box 43
Hinton, VA 22831
703-867-9421

SOUTHERN REGION REP.

Mrs. Shirley Carte
Rt 4 Box 459
Live Oak, FL 32060
904-776-1324

TEACHER EDUCATOR REP. (AAAE)

Dr. Walter N. Taylor
Dept. of Ag Education
Mississippi State University
PO Box 9731
Mississippi State, MS 39762-9731

(W)601-325-3326
(FAX)601-325-7832

NASAE REPRESENTATIVE

Ms. Mary R. Kane
State FFA Executive Secretary
437 Bluemont Hall, KSU
Manhattan, KS 66506
(W)913-532-6424
(FAX)913-532-7304

NVATA REPRESENTATIVE

Mr. Lindell Duncan
Rt 2 Box 3-B
Haskell, OK 74436
(W)918-482-5221
(FAX)918-482-3346

Alumni MasterCard®

The FFA Alumni MasterCard® program offers uniquely designed cards with special advantages available only to FFA Alumni members. For instance, NO ANNUAL FEE. Help the FFA Alumni by applying for the FFA Alumni MasterCard® from MBNA America. The FFA Alumni Association will receive contributions for each card issued and every time you use the card to make a purchase. This is a great way to support the FFA Alumni. MBNA America, the bank that sponsors our credit card program, is one of the nation's largest credit card companies. For more information, contact MBNA America at 1-800-847-7378 and use priority code NVBF.

Woody Cox Accepts New Position

Woody Cox, National FFA Alumni Executive Director for the past 19 years, has been hired by the Minnesota Department of Education to coordinate the area of school-to-work transition. Congratulations are in order to this hard working, strong supporter of education.

Special Recognition

A special presentation is being planned for Woody Cox during the national FFA Alumni convention. A "book of letters" and special gift are being arranged. If you have an amusing story, a remembered event, or would like to wish Woody success in his new position, please mail your letter, flat, to Elizabeth Flatt, 4041 Pleasant Hill Road, Kelso, WA 98626. If you wish to contribute to the special gift, send your contribution to FFA Alumni Assn., PO Box 15058, Alexandria, VA 22309-0058. Please indicate that your contribution is for "Woody Cox's Special Gift. Letters and contributions need to be postmarked by August 1, 1995.

New Delegate Registration Procedure

States are required to register delegates for national convention by October 1 this year. Each active state will be allowed to list alternate delegates at a ratio of one-half the number of delegates allowed or a minimum of two alternates. **Only FFA Alumni members listed on the delegate registration form will be allowed to serve as voting delegates.** The apportionment is one delegate for every 200 members. **Registration forms must be postmarked to the national FFA Alumni office by October 1.**

Successful Safety Fund-Raiser

For a safety project, the Palco FFA Chapter decided to sell "Butt-Buddy" gun holders. The "Butt-Buddy" is a leather pocket, attached to a belt, that holds the butt end of a gun as the hunter carries it. If the hunter falls, the gun is held in place. Also, a gun such as a 12-gauge shotgun can feel very heavy after walking several miles. The "Butt-Buddy" helps support the weight of the gun and decrease fatigue.

We were introduced to the "Butt-Buddy" at a booth in the Career Show at last year's national FFA convention. After an explanation of the device, we decided to use it as a safety project. In Northwest Kansas, where our chapter is located, practically all FFA members either hunt or entertain guests during pheasant and deer seasons. The past hunting season gave us an opportunity to introduce this safety device. We purchased a supply of "Butt-Buddies" before Christmas and sold them to members for their own use or for gifts.

Individuals using the devices commented on how well they worked. The Palco FFA Chapter plans to expand this project in 1995. If you are interested in ordering "Butt-Buddies," contact the Long Gun Holster Company, 1-800-345-2195.

FFA Alumni State Leaders' Conference Sponsored by Philip Morris U.S.A.

The 1995 FFA Alumni State Leaders' Conference will be even more exciting than last year's!! The conference theme is "Let's Paint a Colorful You!" Philip Morris U.S.A. is again sponsoring this annual conference for FFA Alumni leader's as a special project of the National FFA Foundation. The conference is being held in Arlington, Virginia, Monday, July 24, through Saturday, July 29, and is being directed again this year by Jeanea Lambeth from Arizona. Jeanea is also a member of the National FFA Alumni Council. Several joint activities are scheduled with the FFA State Presidents' Conference. Philip Morris U.S.A. continues to support FFA Alumni growth by providing this opportunity for inservice training and networking of our state leaders. For more information, contact Jeanea Lambeth, 602-892-0993, or the national FFA Alumni office, 703-360-3600, ext. 293.

Council Positions Elections Central and Western Regions

Individuals, in the central and western region states, interested in serving a three-year term on the National FFA Alumni Council should contact their state FFA Alumni officers or the national FFA Alumni office for an application. The application can also be found in the *FFA Alumni Manual*. All applications must be approved by a state FFA Alumni officer and postmarked by June 1 to the national FFA Alumni office. The nominating committee will select candidates during the June council meeting to be placed on the ballots for national convention.

National Council Meetings and Minutes

The National FFA Alumni Council met in March and worked on the FFA Alumni Strategic Plan. The next meeting of the Alumni Council will be June 22-26 in Madison, Wisconsin. Please contact your regional representative on the Alumni Council (see page 2) if you have agenda items or issues that should be addressed. Minutes of past Alumni Council meetings can be obtained by writing the national FFA Alumni office.

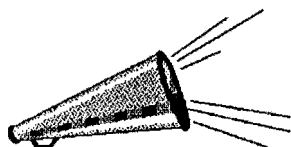
National Convention Activities

The 24th National FFA Alumni Convention will be held in Kansas City, Missouri, Nov. 8, in conjunction with the 68th National FFA Convention, Nov. 9-11. You are invited to attend both conventions. The excitement of more than 32,000 people and the outstanding activities makes the experience of the conventions unbelievable.

Dr. Jim Wand, a former FFA member and currently an internationally known educator, motivator, and entertainer, will present three shows during national convention as fund raisers for the National FFA Alumni Association. Dr. Wand has conducted exciting shows at the past three national conventions and has performed at many state FFA conventions.

The FFA Alumni will host a diversity workshop for FFA members on Thursday during national convention. The workshop will be sponsored by Land O'Lakes.

More information will be in the fall newsletter. Contact the national FFA Alumni office or your state FFA office for more information on the conventions and lodging.



It's Auction Time

Excitement is building, plans are being made and auction items are coming in. The following is a list of items already contributed for the 1995 National FFA Alumni Auction.

Chevrolet pick-up truck *donated by CHEVY TRUCKS*

- 500 gallons liquid plant food *donated by Na-Churs Plant Food Company*
- chainsaw *donated by Homelite Division of Textron, Inc.*
- shotgun *donated by Mossberg*
- \$300 scholarship to the University of Wisconsin-River Falls *donated by Merrill Equipment*
- speech or workshop *donated by Rick Metzger of RLM Enterprises*
- Remline 25-drawer tool chest *donated by CARQUEST Corp.*
- one-of-a-kind Schrade knife *donated by Schrade Cutlery*
- brunch for two at *Benton's Steak & Chop House, Kansas City*
- One night and breakfast for two at *Sheraton Country Club Plaza, Kansas City*
- Canadian fishing excursion for three *donated by Gary Wilkerson*
- power lawn mower *donated by Tecumseh Company, New Holstein, Wisconsin*
- workshop or speech *donated by Patrick Grady*
- two framed, signed and numbered prints of Robert Butler paintings depicting early agriculture in Florida *donated by Florida FFA Alumni Assn.*
- Rocky mineral feeder *donated by Meyer Mfg. Corp.*

Please give us your support for educational scholarships for FFA members. Any FFA Alumni member, local affiliate, FFA chapter or state association wishing to contribute an item or needing more information, please contact Jim Heier, auction chair, at 414-863-8657. Join us for this outstanding event. Mark your calendar for Wednesday, November 8, 1995, Bartle Convention Center, and be a part of the excitement in Kansas City at the National FFA Alumni Auction.

The "Taste of FFA in Kansas City" will again precede the auction. The gala will be open to the residents of Kansas City and everyone attending the national FFA convention.

Florida's Successful Alumni Program

Florida FFA Alumni are on the move! Membership increased from 804 in 1991 to 1,482 in 1994. Many have asked, "What is your secret?" We reply, "No Secret!! Our success is based on much planning and hard work by dedicated Alumni members."

The Florida FFA Alumni Association goal is "Every FFA Chapter Have an FFA Alumni Affiliate." The 1992 FFA state convention delegates voted that no FFA chapter could compete at the state or national levels unless they have an active FFA Alumni affiliate. This has greatly increased interest in the Alumni program and allows state district Alumni directors the opportunity to visit FFA chapters and explain the Alumni program and how it benefits the chapter, advisor and the agricultural education program.

Florida is not all palm trees and sandy beaches. It is very much an agriculture state—crops include fruits, vegetables, cotton, peanuts and soybeans and livestock includes hogs, poultry, sheep and cattle. Florida is one of the largest cattle producing states in the United States.

The Florida FFA and FFA Alumni members understand how important agriculture is to the state's economy. Alumni members also know how FFA benefits our youth. Therefore, as Alumni members, we strive to support the FFA and our youth—"America's Most Valuable Harvest."



School Officials Luncheon and Workshop at 68th National FFA Convention

According to school officials who attended last year's convention activities, the national FFA convention is a great opportunity to observe the benefits of agricultural education-FFA programs. The FFA Partner Development Team and the National FFA Alumni Association are working in cooperation on the School Officials Luncheon and Workshop for the 1995 National FFA Convention. FFA Alumni are encouraged to invite administrators, school board members, counselors and other school officials to participate with their local FFA chapters in the national convention. Chapters can contact Laura Thomas, FFA Partner Development Team, 703-360-3600, ext. 303, for information on purchasing luncheon tickets for their convention guests.

Stephen Franks, president of the National Association of State Directors of Vocational Technical Education Consortium, and Mike Brown, president-elect of the National Association of Secondary School Principals, will attend the convention and participate in these activities.

The luncheon and workshop will be held Thursday, November 9, in Bartle Hall. These activities will provide an overview of the convention and an opportunity to communicate about agricultural education and career opportunities. The luncheon will also be a way to say thanks to these "key partners" for their support of FFA. All school officials in attendance will receive a special commemorative gift.

Welcome New Life Members

Join our prestigious list of 17,156 life members supporting agricultural education and the FFA. Life membership is a one-time-only fee of \$150. Life members may designate that upon their death a check, equal to the amount of their life membership, be presented as a memorial scholarship to an FFA member in a chapter or state, or may be designated to support some area of agriculture and/or agricultural education, or may remain permanently in the national FFA Alumni trust fund.

Florida	Lori Chamberlain	Wisconsin
George Jones	Kara Endsley	Allen Abraham
Roger McDowell	Dawn Green	LuAnn Alme
Robert V. Rotondo	Luke Haywood	Amy Anderson
Georgia	John Jones	Gerald Athorp
Marvin Giddens Jr.	Niccole Lowe	Jeff Barman
Jack Smith	Beth McNeilly	Kris Brueggen
Illinois	Lisa Memmer	Julie Case
Jeff Bash	Wendy Pline	Stacy Crull
Kent Breedlove	Matt Smego	Arnold Davis
Randy Brim	Jason Thomas	Doug Dorn
Larry De Sutter	Jenny Wheeler	Michael Duginski
Charles DeSutter Jr.	Missouri	Dan Fedie
Henry Garlisch	Tod Boxley	Jerry Fredrick
Larry Garlisch	Dennis Harms	Merna Fremstad
Jason Kuester	Hoss Matthews	Charlie Gruber
Loren Meeker	Nebraska	Kristin M. Hanson
Ross Meeker	Gary Baumert	Mary Holig
John Parkin	Bruce Bloedom	Alan Jesberger
Philip Perzee	Ron Dames	Andy Koss
Indiana	Bob Feller	Warren Loofboro
Tiffany Schaefer	Judy Feller	Peggy O'Leary
Kansas	Tony J. Kaufman	Caryl Onesti
Amy Haselhorst	Matt Schlueter	Bob Parilek
Beverly Haselhorst	Joseph T. Skavdahl	Jeff Pickart
Dan Haselhorst	Kimberly Stuart	Mary L. Pickett
Eric Haselhorst	Jared P. Walshoski	Brian Rademacher
Jason Haselhorst	Angela Watts	Fem Reed
Kentucky	Brenda Williams	Jerry Rowe
Diane Dawson	New York	Jesse D. Singerhouse
Roger Givens	Richard H. Call	Terry Sischo
Michael Hughes	Ohio	Scott M. Sommerfield
Rush Midkiff	Jessica King	Liza Sternitzky
Shane Wells	Bob Makin	Paul Thompson
Michigan	Oklahoma	Jeffrey D. Wittek
Jodi Bartholomew	Lindell Duncan	Howard Young
Ann Brooks	Utah	Rachel Zabel
Sandra Campbell	Gordon E. Drake	

Promotional Brochures Available

Our newest brochure titled, "Where does the FFA Alumni fit into this picture?" promotes volunteers in your community to serve as resources. The informational brochure titled, "After all it did to make me what I am..." describes membership and purposes of the FFA Alumni Association. Also available is the life membership brochure. Orders for up to ten copies of the "Where does the FFA Alumni..." brochure and the life membership brochure are free. Larger orders are ten cents each. At this time, there is no charge for ordering the "After all it did..." brochure. Annual national membership dues are \$7 and life membership dues are \$150. We set a record of 40,718 members for 1994. Let's set another record for 1995 with 45,000. Contact the national FFA Alumni office, 703-360-3600, ext. 293, to order brochures.

Ideas for Developing Alumni Support

The best support group an agricultural education teacher can have is an active FFA Alumni affiliate. An active support group can mean the difference between having a quality agricultural education-FFA program or just having an existing program. The following ideas can be used by agricultural education teachers to develop local alumni support.

First, develop a public relations program to inform prospective FFA Alumni members within the local community about the agricultural education program. Publicize all aspects of the program to include curriculum, FFA activities and Supervised Agricultural Experiences. Next, invite members of the community to observe and participate in activities. This will give them opportunities to see the program and students in action. Inform them of the many possible contributions they could make as members of the FFA Alumni. Examples of activities to get alumni initially involved include fairs, field days, fund-raising and assisting contest teams with preparation. Once involvement is secured in initial activities, move members to other activities such as assisting with curriculum review and revision and program review and evaluation.

After involvement and support are developed, the agricultural education teacher should have continuous, challenging assignments, reward Alumni members for their work and communicate frequently. Alumni support could mean the difference in having a quality agricultural education program.

An Investment in Tomorrow's Leaders

The National FFA Foundation is the fund-raising body of the National FFA Organization. The Foundation relies on private contributors to provide funding. A growing corps of individuals make annual cash contributions as Executive Sponsors. These contributions deliver a great benefit to FFA members, including special programs, proficiency awards, team events and recognition on the local, state and national levels. We encourage you to become an Executive Sponsor and thus be an investor in Tomorrow's Leaders. The address is listed in the article "Salute to FFA Foundation Sponsors" in the next column.

Limited Edition ERTL Tractors

The Kansas FFA Alumni announces the second in a series of limited edition tractors produced by the ERTL Company. This year's tractor is a 1/16th scale Farmall F-20 with a steerable front end and FFA emblem decal on the seat. The chassis has a die cast insert, reading "2 1994 KANSAS FFA ALUMNI." Each tractor comes in a specially designed box with a letter of authenticity from ERTL. Proceeds will be used to support activities of the Kansas FFA and FFA Alumni. The 1994 tractor is available for \$30 plus s/h. A limited number of 1992 Farmall H tractors are still available for \$25 plus s/h. A set of the two tractors is \$50 plus s/h. Shipping and handling for 1-2 tractors in Kansas is \$5, out of state \$7.50; 3-6 tractors in Kansas is \$7.50, out of state \$10. Send orders to Rod Stewart, Executive Director, Kansas FFA Alumni, Rt 2 Box 121, Washington, KS 66968. Make check payable to Kansas FFA Alumni.

Salute to FFA Foundation Executive Sponsors

For a contribution of \$100 or more, you can join this prestigious group of 1995 Executive Sponsors. Years of support are listed in parentheses. Please mail your contribution to the National FFA Foundation, PO Box 45205, Madison, WI 53744-5205.

Arizona	Michael Jackson (8)	Robert E. Ridsdale (2)
Howard Morrison (18)	Mark Timm (2)	New Mexico
California	Douglas Vawter (4)	Allen/Jerri Akers (8)
Joseph H. Alwan (7)	Iowa	New York
Bob Beyn (1)	Paul J. Ambrecht (1)	Alfred H. Krebs (26)
Edward J. Conner (1)	Jim Cornick (14)	Wilbur Townsend (21)
Kimberly Dupont (1)	Joseph M. DeSaria (1)	North Dakota
Steve Englert (1)	Nicholas M. Frey (2)	Erik A. Olson (1)
Donald Gregory, Jr. (1)	John R. Hagie (16)	Ohio
Eric G. Juline (1)	Brian Hart (2)	Robert Buxton (17)
Mickey McNickle (1)	Owen J. Newlin (22)	Scott Steiner (8)
Douglas G. Moore (1)	Tom Schliesman (8)	Richard Urbanowski (4)
Edward Murakami (17)	Frederick Thome (14)	Oklahoma
Jim Orradre (8)	Kansas	Harold Hamilton (6)
Larry Pennini (1)	Nelson/Marilyn Galle (18)	Phyllis Sokolosky (18)
James J. Shelton (1)	Phil/Sandra Kingston (16)	Pennsylvania
Karen J. Simon (1)	Leo T. Rasmussen (5)	Enos B. Heisey (21)
John A. Stearns (30)	Louisiana	William Kirk, Jr. (4)
John G. Waterbury (1)	Patrick J. Quinn (14)	Earl M. Morgan (4)
Canada	Maryland	James Wissmiller (1)
Maurice Delage (4)	Elmer Cooper (13)	Robert A. Woods (4)
Colorado	W. Dale Hess (12)	Rhode Island
Robert C. Hummel (2)	Massachusetts	Rob LaChance (1)
Thomas Lovegrove (6)	George Denny III (1)	South Carolina
Delbert G. Miles (1)	Michigan	J. F. Wyse (8)
Jeff Tichota (5)	Norman A. Brown (7)	Tennessee
Connecticut	Joseph L. Downey (14)	Tom Hennesy (10)
Dale F. Larson (1)	George W. Hartley (5)	Joe LaFollette (1)
Richard M. Pelton (2)	Tim Martinson (14)	Edwin Robertson (10)
Delaware	Earl R. Sorensen (18)	Joseph Scarlett (2)
Carol Lee Johnson (1)	Minnesota	Texas
Robert Mulligan (1)	Rodney L. Boyer (1)	J. Patrick Kaine (11)
Keelan W. Pulliam (1)	Denis J. Daly (1)	James L. Ketelsen (14)
Florida	Larry D. Hayes (8)	Lonnie L. Lindsey (4)
Earle Borman, Jr. (11)	James A. Howard (15)	David A. Maurer (12)
David Phillipson (21)	Harold Johnson (1)	Mickey McCall (2)
Georgia	Robert P. Svoboda (1)	David C. Warren (4)
Paul G. Brower (15)	William Templeton (17)	Virginia
Julian Maxwell (1)	Robert G. Wells (10)	David R. Hill (9)
Josiah Phelps (24)	Richard E. Yahnke (5)	John Hillison (10)
Charles E. Seaton (8)	Mississippi	Oakley M. Ray (8)
Illinois	Charles R. Gibson (10)	James P. Scott, Jr. (1)
Nicholas Babson (10)	Missouri	Robert Seefeldt (7)
Boyd C. Bartlett (22)	Terry A. Blanks (5)	Bernie L. Staller (18)
Howard G. Buffett (2)	Henry D. Bobe (5)	Washington, DC
Thomas W. Burnell (1)	H. D. Cleberg (4)	Philip Olsson (1)
Neil Christenson (10)	Charles Conrad (13)	R. Duffy Wall (3)
William J. Doyle (2)	Charles G. Gause (5)	Gregory A. Young (18)
George K. Gill (1)	Robert Hames (13)	West Virginia
Jim Guilinger (18)	Terry Heiman (5)	Robert Maxwell (18)
E. C. Henderson, Jr. (3)	Walter F. Maharay (1)	Homer J. Yokum (7)
Allan R. Johnson (18)	Edward McMillan (13)	Wisconsin
Paul C. Krouse (2)	Nicholas Reding (2)	Jon R. Carlson (4)
Robert R. Lane (4)	James Robertson (7)	Arnold B. Cordes (17)
Robert Lanphier III (14)	Robert W. Spence (5)	Joseph Darcey (8)
Thomas Luehder (5)	Jerry Steiner (2)	Floyd/Betty Doering (18)
Kermit McCormack (1)	Hendrik Verfaillie (2)	Kenneth R. Gangl (1)
Jeff Moss (8)	James A. Williams (5)	Kevin A. Keith (12)
John Pool (16)	Nebraska	William D. Knox (15)
Robert W. Porter (5)	Ted D. Ward (18)	Eugene C. Meyer (11)
Mark Rumbold (10)	Andrew Winstrom (1)	Gene Pressnall (15)
Robert Van Patten (6)	New Hampshire	Merle Richter (1)
Indiana	Wentworth Hubbard (16)	Jean-Pierre Rosso (1)
Perry Gehring (11)	New Jersey	George L. Russell (1)
Nick D. Hein (11)	Michael C. Ames (1)	

FFA Alumni Supply Items – Spring '95

A. Alumni Road Sign

FFA Alumni emblem is placed on a 21" x 30" durable, high impact polystyrene sign.

•Item ARS ea \$20.00

Letter Decals – These Dura-Cal letters are 1-1/2" in height. Adhesive backing assures permanent sticking to any smooth surface without water. Guaranteed for at least two years of outdoor use. Each sheet contains 60 characters.

•Item D-4 ea \$3.25

NOW AVAILABLE! Additional letter sheets. Nine additional A, E, I, N letters on separate sheet.

•Item D-4A ea \$2.25

B. Alumni Flag

FFA Alumni flag (3' x 5') is 100% nylon for indoor or light outdoor use. Flag is blue with emblem in gold.

•Item ALF-3 ea \$57.00

C. Alumni Manual

This 40-page manual explains how to organize, suggests activities for affiliates, contains guidelines/applications for national contests and programs, and includes the history of the FFA Alumni.

•Item ALM ea \$3.50

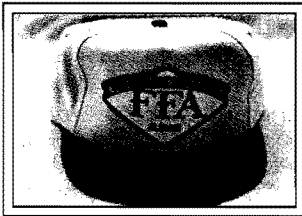
10 or more ea \$2.50

D. Cap

Natural canvas cap with royal blue bill and special FFA Alumni patch on front. One size fits all.

•Item ACAP-1 ea \$8.50

10 or more ea \$8.00



E. Alumni Badge

Identification at banquets, meetings, conventions and other activities. Sturdy 2" celluloid badge with FFA Alumni emblem.

•Item ACB-1 ea \$.50

10 or more ea \$.39

F. Stationery and Envelopes

Note: These items should be ordered directly from the Alumni office, 703-360-3600, ext. 293. Letterhead can be personalized but envelopes come with emblem only. Available in both one- and two-color emblem.

Stationery per 1000 (one-color) \$75.00

Stationery per 1000 (two-color) \$100.00

Envelopes per 500 \$20.00

G. Alumni Business Cards

Gold and blue FFA Alumni emblem with name, address and phone number in black ink. Quantity 300.

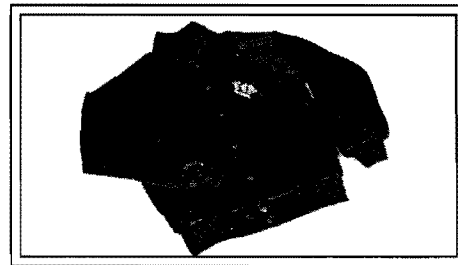
•Item BUSC-ALU \$40.00

H. Corduroy Jacket

Royal blue corduroy jacket, 85% cotton, 15% polyester with mandarin collar, knit cuffs and wristband, snap front and raglan sleeves. FFA Alumni patch. Sizes: S M L XL XXL. Add \$2.00 for XXL. Name in gold embroidery at no extra cost. Please give name.

•Item 355-AL ea \$47.00

Size XXL ea \$49.00



I. Blazer Emblem

Attractive Swiss embroidered 3" x 4" FFA Alumni blazer emblem in three colors on a blue felt background.

•Item Crest No. 4 ea \$3.40

J. Decals

FFA Alumni emblem decal (4" x 5-1/4") in three dimensional color with mylar finish. Weatherproof with peel-off backing. Will adhere to most any surface.

•Item AD-1 ea \$1.25

10 or more ea \$1.00

All prices include shipping.

K. Alumni T-Shirts

This 100% cotton t-shirt with "Alumni FFA" neon imprint on the front and back (back side pictured). Sizes: S M L XL XXL. Add \$2.00 for XXL.

•Item 364-T California blue ea \$10.00

•Item 364-B Black ea \$10.00

Size XXL ea \$12.00



L. Alumni Ash Sweatshirt

Ash sweatshirt in 50/50 poly/cotton with Alumni logo in blue and red. Sizes: S M XL XXL. Size L is no longer available. Add \$3.00 for XXL.

•Item 363 ea \$17.00

Size XXL ea \$20.00

M. Alumni Ash T-Shirt

Ash T-shirt in 50/50 poly/cotton with Alumni logo in blue and red. Sizes: S M L XL.

•Item 362 ea \$8.00



N. Alumni Fleece Cardigan

White fleece cardigan with Alumni logo in blue and red. One size fits all.

•Item 361 ea \$25.00

O. Alumni Plaques

Most any type of plaque can be adapted for special occasions. Please look through the plaque section of the FFA Catalog for plaques. Standard FFA Alumni plaque is 7" x 9" with cherry finish, screen-etched FFA Alumni emblem and engraving plate.

•Item PAL-1 ea \$27.00

Etched engraving per character \$.15

Screen-etched FFA Alumni emblem plate (3 3/4" x 5") for use with other plaques.

•Item 6004-R ea \$11.50

P. Alumni Poster

FFA Alumni emblem (old emblem) in full color printed on 70 lb. 23" x 35" enamel paper.

•Item AAA-1 ea \$4.00 (Sale price)

Q. Alumni Tie

Exclusive design for FFA Alumni. Dark blue with gold lettering.

•Item AL-T ea \$10.00

R. Official Membership Pin

Gold-plated FFA Alumni pin with blue enamel background. Can be worn on lapel or as a tie tac.

•Item ALP-1T ea \$7.50

10 or more ea \$6.50

S. Oxford Jacket

Navy blue nylon jacket comes with a 5 oz. nylon polyfill quilted insulated lining for extra warmth. FFA Alumni patch. Snap front with striped gold, white and blue stretch nylon cuffs, knit waistband and knit stand-up collar. Sizes: XS S M L XL XXL. Add \$3.00 for XXL.

•Item AWB-5 ea \$43.00

Size XXL ea \$46.00

Personalization in gold thread: first, last name and middle initial, if desired. Add \$3.50.

T. Alumni Cuff Links

Gold-plated FFA Alumni cuff links with blue enamel background.

•Item ACL-1 ea \$4.75 (Sale price)

Phone Orders and Information: 703-780-5600

Free Fax: 1-800-366-6556

Credit card required for phone or fax orders.

Other items such as cap patches (FFA Alumni emblem) are available.

FFA Alumni Supply Order

SEND TO: FFA Alumni Supply, P.O. Box 15058, Alexandria, VA 22309. Include check, money order or credit card information.

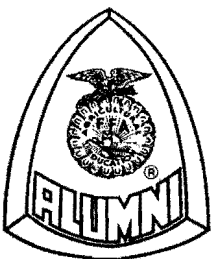
PRICES INCLUDE HANDLING CHARGE

PRICES LISTED ARE IN EFFECT UNTIL September 1, 1995.

Ship to: _____
 Address _____ City _____ State _____ Zip _____
 Phone _____ Fax No. _____

Item #	Qty.	Size	Description	Lettering Desired (Type or Print)	Price Each	Total Price

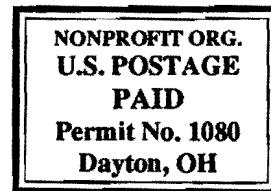
Credit Card Information: _____ Subtotal _____
 _____ VISA _____ MasterCard _____ State Tax (VA members only) _____
 Card No.: _____
 Expiration Date: _____ Signature (ordered by): _____ **TOTAL ENCLOSED** _____



"FFA Alumni-
Supporters of Agricultural Education"

NEWSLETTER

Future Farmers of America
National FFA Alumni Association
5632 Mt. Vernon Memorial Hwy.
P.O. Box 15058
Alexandria, VA 22309-0058
703-360-3600, ext. 293



NEWSLETTER

FFA Alumni Calendar

- | | |
|---|---|
| June 1 – State Resolutions and Constitutional Amendments for National Consideration Due | September 1 – State Newsletter Inserts Due |
| – Outstanding Achievement Award Applic. Due | – Outstanding Affiliate Entries Due |
| – National Council Nominations Due (Central and Western Regions) | October 1 – Registration of Delegates Due |
| June 22-26 – National FFA Alumni Council Meeting, Madison, WI | – Legion of Merit Applications Due |
| July 24-29 – FFA Alumni State Leaders' Conference | – Blue Blazer Awards Determined |
| | – Scrapbook Contest Entries Due at East Magnet High School, Kansas City, Missouri |
| | October 31 – Last Date for Receiving 1995 Membership Dues |

**DODGE
TRUCK**



FFA and DODGE TRUCK
A Big Part of America's Agriculture

**DODGE
TRUCK**



All of us on the Dodge Truck Team are proud of our long-time affiliation of sponsoring the FFA and pleased to assist the FFA move forward. Believe it or not, we're in our 42nd year together! After that many years, we consider all FFA members to be part of the Dodge Team.

It seems teamwork has always been the pillar of the agricultural community; lending a helping hand to friends and neighbors and sharing new ideas keeps farmers in business. Well, teamwork at Dodge Truck is the key to our success as well. We've found that adding truck owners to our development teams provides real world insight that helps engineers develop products that meet customer needs better than ever before. We call it putting the customer in the driver's seat. That's what we call "changing the rules."

But teamwork to design and build great products is only the beginning. Agriculture is a big part of our truck business, accounting for about 1 of every 5 sales of the New Ram Pickup in fact. It should come as no surprise that Dodge Truck is "teaming up" with the people of agriculture to insure the success today and in the future for American agribusiness.

Dodge Truck's partnership program with agribusiness is meant to build teamwork for the long haul, and that begins with FFA. Dodge Truck is committed to assisting the FFA strive for excellence by providing scholarships and proficiency awards for FFA members, along with sponsoring the Alumni Newsletter. We'll also play a key role in the Career Show in Kansas City, and bring along a few surprises to top last year.

Our excellence in agribusiness partnership continues with the American Farm Bureau's Young Farmer and Rancher Program (YFR), including cash merit awards for state winners and Dodge Trucks as prizes for national winners of the YFR Achievement and Discussion Meet programs. Finally, we support 46 state Farm Bureaus with an exclusive member discount program, good for an extra \$500 cash-back on Dodge Ram pickups, Dakota pickups and full-size Ram Vans. Just our way of recognizing the unique needs of farmers by lending a helping hand of support.

That's our commitment to you and all the people that make agribusiness work for America.