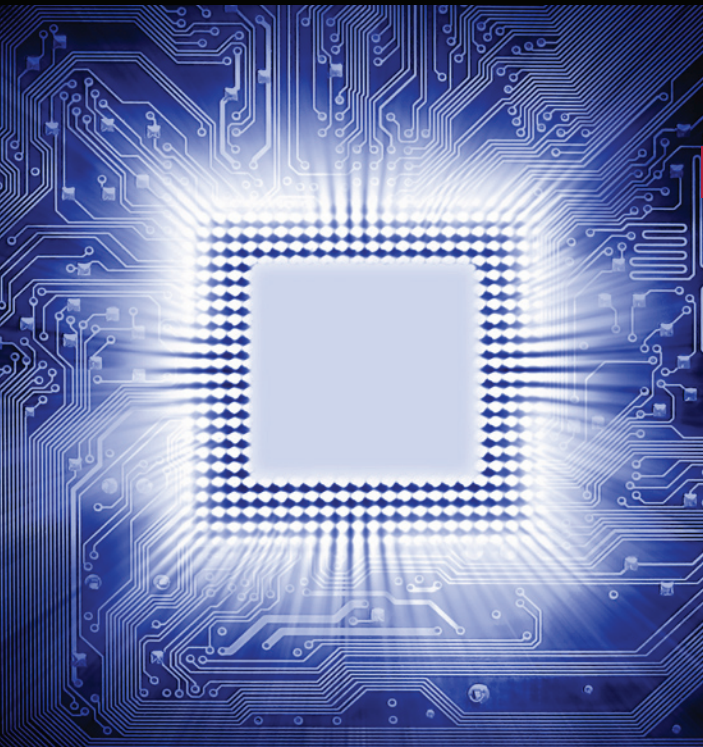


Enhance *your skills*
Change *your career direction*
Add *to your expertise*



VISIT WWW.CLN.IUPUI.EDU
AND CLICK THE **COURSE CATALOG**.

About IUPUI

Indiana University – Purdue University Indianapolis (IUPUI) is Indiana’s most comprehensive university campus. IUPUI was formed in 1969, but several programs have provided Central Indiana with quality education and services for much of the century. IUPUI is a premier urban institution and offers students courses year round at times during days, evenings and weekends that meet the demanding schedules of adult learners.



WHERE **IMPACT** IS MADE

About Community Learning Network

The IUPUI Community Learning Network provides hundreds of continuing education classes and serves over 7,000 learners annually in Central Indiana with more than 15 certificate programs.

Continuing Education Programs

IUPUI COMMUNITY LEARNING NETWORK

620 Union Drive, Room 142
Indianapolis, IN 46202
Phone: (317) 278-7600
Fax: (317) 274-2638
Online: www.cln.iupui.edu

*For information about additional certificate programs,
please visit us online or call our offices.*

IUPUI | **COMMUNITY
LEARNING NETWORK**
INDIANA UNIVERSITY–PURDUE UNIVERSITY
INDIANAPOLIS

Computer

Certificate Program



**YOUR LIFELONG
LEARNING CONNECTION**

IUPUI | **COMMUNITY
LEARNING NETWORK**
INDIANA UNIVERSITY–PURDUE UNIVERSITY
INDIANAPOLIS

Computer

Today's world is highly dependent on technology. You can be on the leading edge by earning one of the computer certificates offered through the Continuing Education Program. Consider a certificate in one of the following:

MICROSOFT OFFICE CERTIFICATE

Microsoft Office is the leading software suite used by U.S. businesses. If you're seeking a job, changing your present one, or simply want to be more productive, you can benefit greatly from this certificate program. Required courses are as follows: Introduction to Word, Introduction to Excel, Introduction to Access, Introduction to PowerPoint, and one (1) elective MS Office course.

Refer to certificate #CERT99T01.



PROGRAMMING COMPETENCY CERTIFICATE

We offer a wide variety of courses that meet your personal and business needs. To receive this certificate, you must complete four (4) programming courses in SQL, C#.Net, ASP.NET, and AJAX in addition to Java and HTML. *Refer to certificate #CERT99L02.*

BASIC WEB DESIGN CERTIFICATE

The Basic Web Design certificate is intended for those who want to begin to design and maintain a professional-looking personal or company web site. It provides the framework and basic knowledge needed to get started, and prepares beginners with many of the most commonly used tools in Web design and maintenance. The program includes three (3) core courses of Introduction to Web Design, Introduction to HTML, and Introduction to Dreamweaver, and two (2) elective Web design courses. *Refer to certificate #CERT99T02.*



**VISIT WWW.CLN.IUPUI.EDU
AND CLICK THE COURSE CATALOG
TO ENROLL.**



Fees and Enrollment

The one-time Certificate Program Fee of \$35.00 is due upon registration. Learner must pay individual course fees or additional fees listed during website registration.

Refer to course numbers listed in the catalog.

Certificate Requirements

Learners must attend a minimum of 75% of class sessions for each individual class. Learners will receive Continuing Education Unit certificates after the successful completion of each class. Final certificate will be awarded to learners in good standing *only* after completion of all classes.

